

Footpath Construction—Russell Street (Kent Street to Walker Street)

PROJECT:

This project provides for the construction of a 2.5m wide concrete footpath for a distance of 445m on the southern side of Russell Street, Maryborough from Kent Street to Walker Street.

This project was identified for completion as part of Council's Walk and Cycle Strategy and is supported by the Queensland Government's Cycle Network Local Government Grants program.



PROJECT ESTIMATE:

\$445,000

PROJECT SCOPE OF WORKS:

- Concrete footpath construction;
- Removal of 9 shrubs/trees and the trimming of 13 shrubs/trees;
- Planting of 14 new Tuckeroo trees;
- 12 sections of new driveway areas;
- Grated kerb crossings to two driveways;
- Three new coloured raised priority pedestrian crossing areas at Ambrose White Street, Clayton Street and Glasgow Street;
- New power pole locations;
- Installation of welded mesh panel at end of pathway at Walker Street;
- New kerb ramps;
- Topdressing and turfing of disturbed areas.

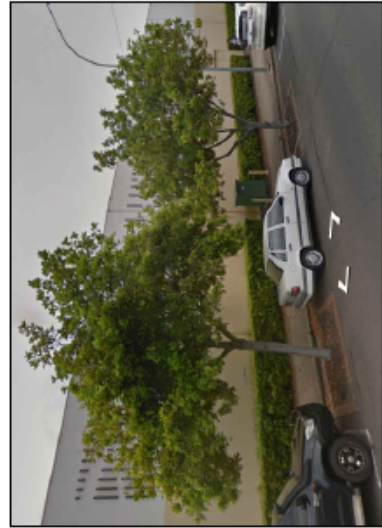
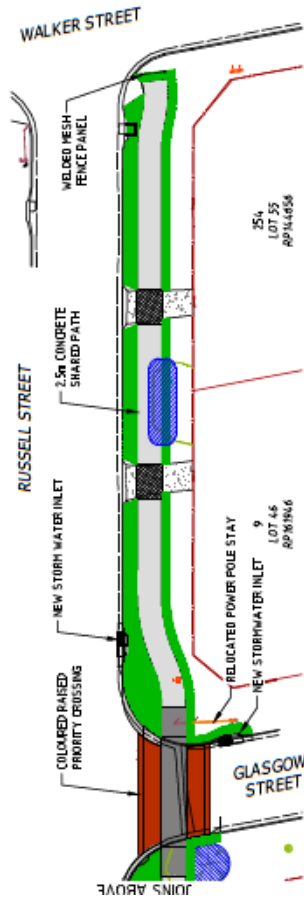
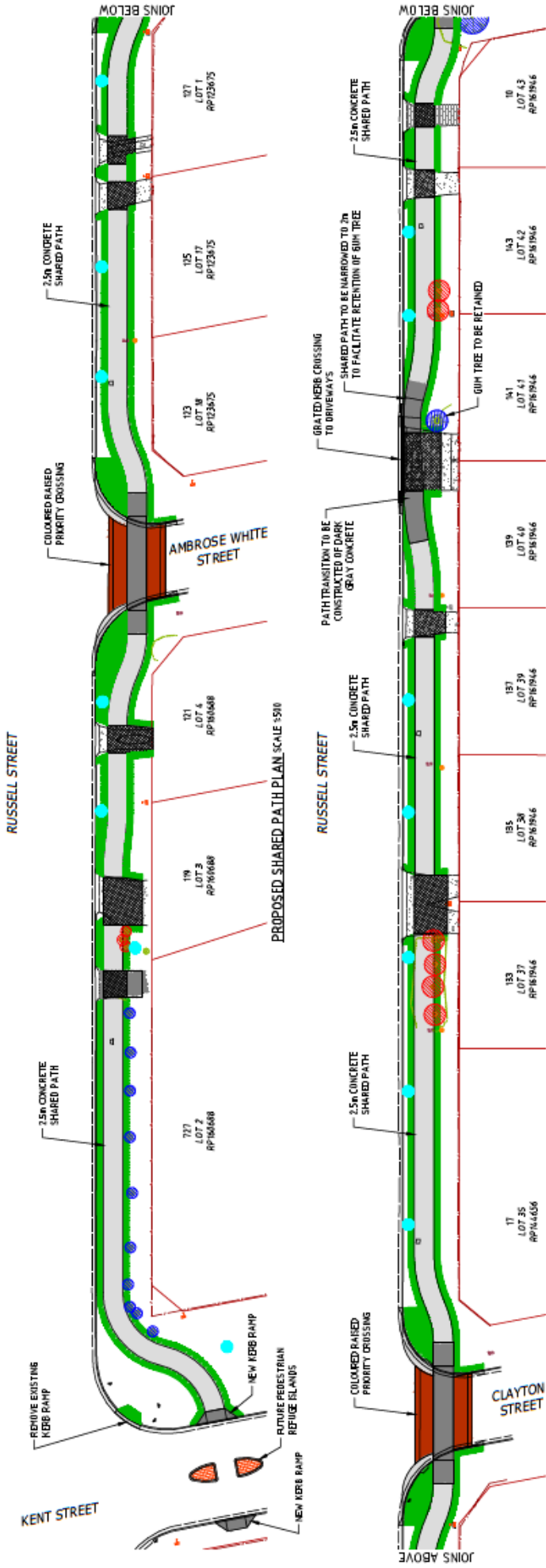
The traffic management plan that will be put in place for the duration of the construction period will be developed prior to works commencing.

INDICATIVE PROJECT MILESTONES

June 2020	Final Design
July/Oct 2020	Tender Period
Sept/Nov 2020	Construction Period
Dec 2020	Project Completion

Note: Project milestones are subject to contract and weather and may change.

Footpath Construction—Russell Street (Kent Street to Walker Street)



TUCKEROO



- LEGEND - NEW**
- NEW STORMWATER INLET PIT
 - NEW TOPSOIL AND TURFING
 - NEW PAVEMENT
 - NEW CONCRETE SHARED PATH
 - NEW CONCRETE DRIVEWAY
 - NEW GRAVEL DRIVEWAY
- LEGEND - EXISTING**
- NEW STORMWATER INLET PIT
 - NEW TOPSOIL AND TURFING
 - NEW PAVEMENT
 - NEW CONCRETE SHARED PATH
 - NEW CONCRETE DRIVEWAY
 - NEW GRAVEL DRIVEWAY
- LEGEND - REMOVAL**
- NEW WELDED WESH FENCE
 - NEW O/H POWER LINE ALIGNMENT
 - NEW STAY WIRE
 - NEW POWER POLE LOCATIONS
 - TREES / SHRUB TO BE RETAINED
- LEGEND - TREE STATUS**
- TREES TO BE RETAINED & TRIMMED
 - TREES TO BE REMOVED
 - PROPOSED TREE (TUCKEROO)
- TUCKEROO TREE - CUPANIDOPSIS ANANAS CARDOIDES**
40 LITRE BAG