

LEGEND

▭ Cadastral Boundaries

Risk Rating

▭ Low

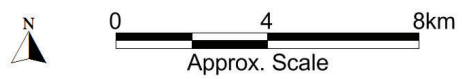
▭ Medium

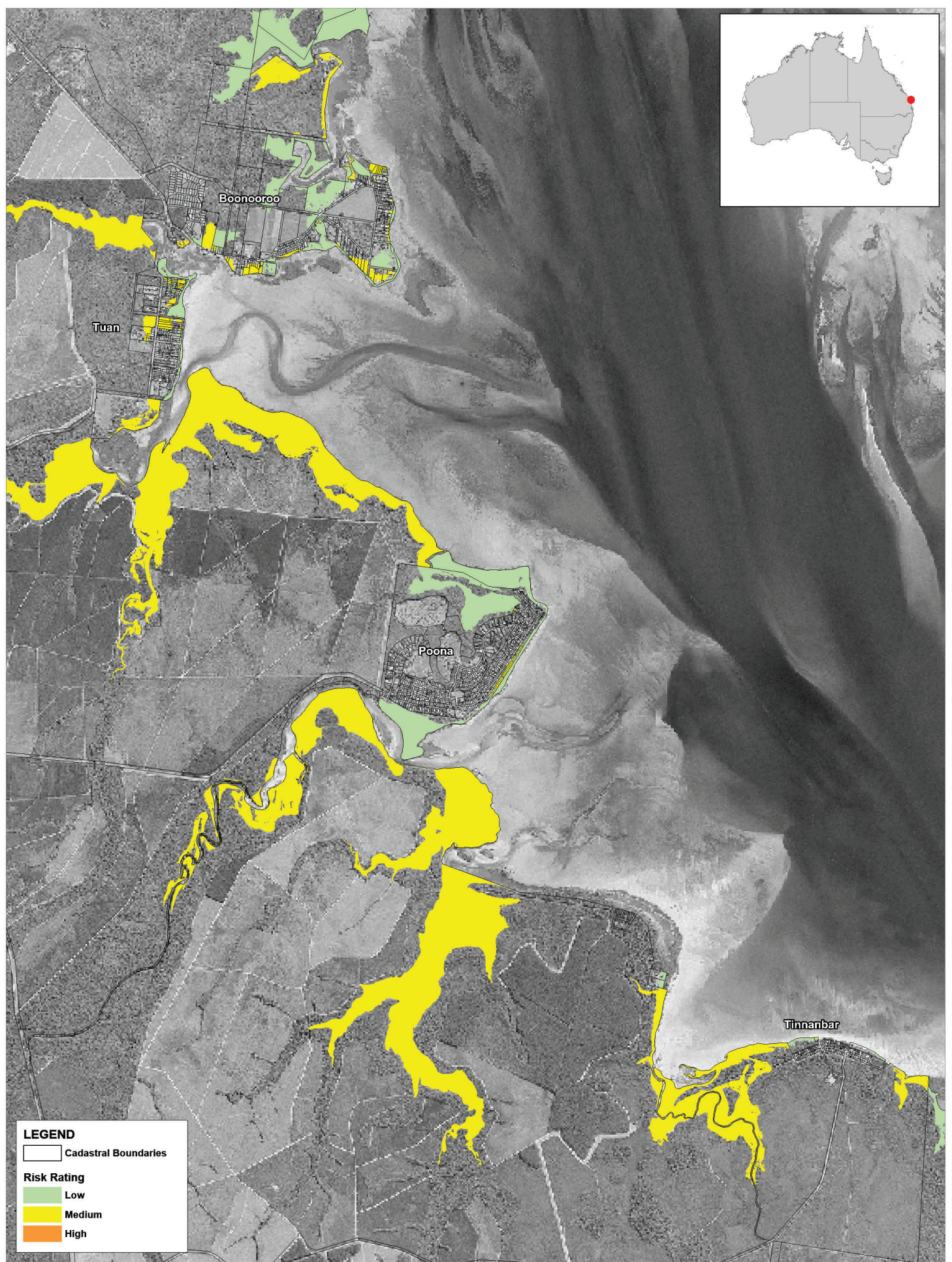
▭ High

Title:
**Regional Planning Zone and Land Parcel Assessment
 Present Day Storm Tide**

Figure:
 Rev:
A

BMT endeavours to ensure that the information provided in this map is correct at the time of publication. BMT does not warrant, guarantee or make representations regarding the currency and accuracy of information contained in this map.





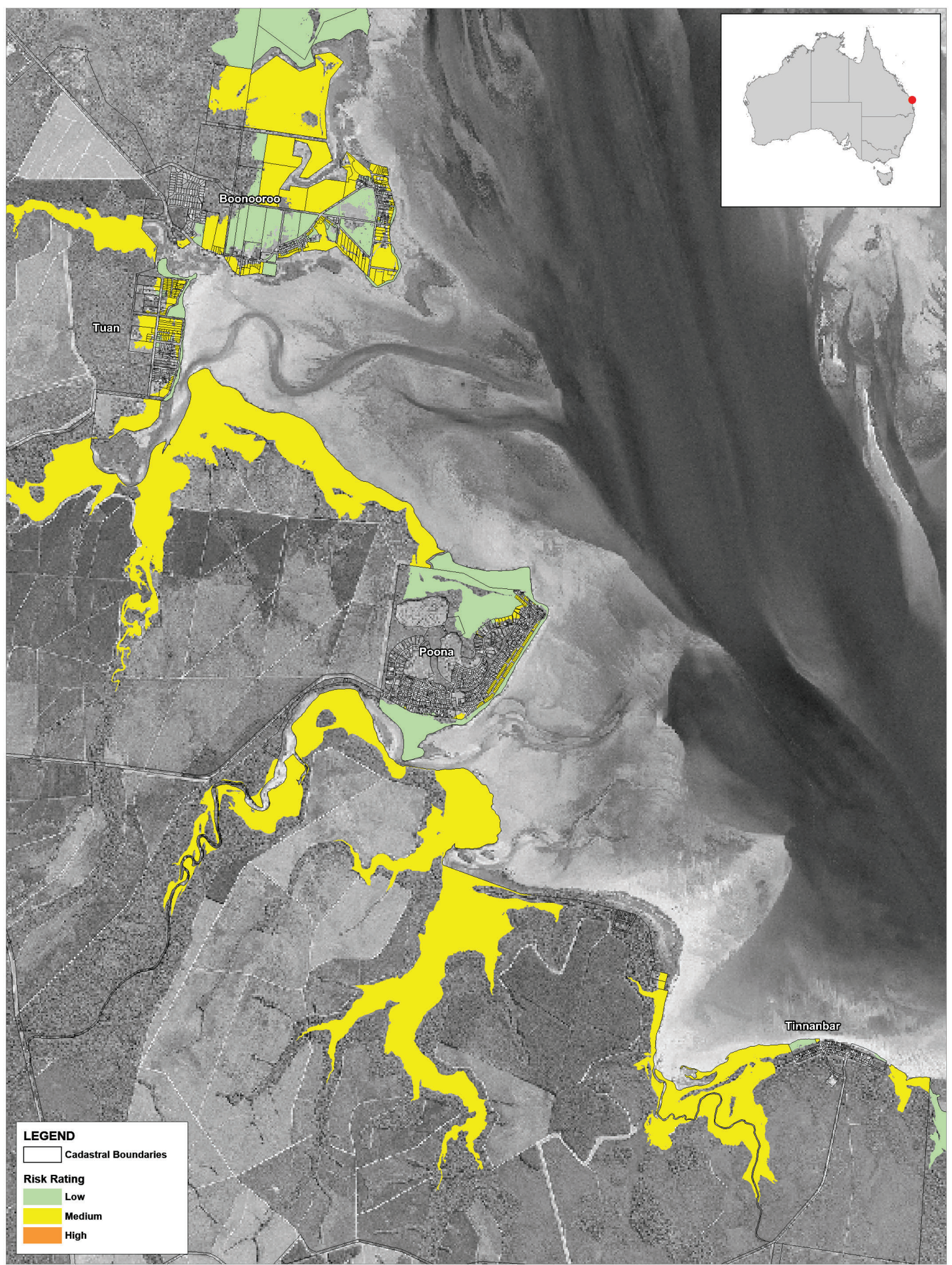
Title:
**Regional Planning Zone and Land Parcel Assessment
 2050 Storm Tide**

Figure:

Rev:
A

BMT endeavours to ensure that the information provided in this map is correct at the time of publication. BMT does not warrant, guarantee or make representations regarding the currency and accuracy of information contained in this map.





Title:
**Regional Planning Zone and Land Parcel Assessment
 2100 Storm Tide**

Figure:

Rev:
A

BMT endeavours to ensure that the information provided in this map is correct at the time of publication. BMT does not warrant, guarantee or make representations regarding the currency and accuracy of information contained in this map.






LEGEND

 Cadastral Boundaries

Risk Rating

-  Low
-  Medium
-  High

Title:

**Regional Planning Zone and Land Parcel Assessment
Present Day Storm Tide**

BMT endeavours to ensure that the information provided in this map is correct at the time of publication. BMT does not warrant, guarantee or make representations regarding the currency and accuracy of information contained in this map.

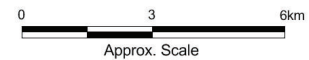


Figure:



Rev:



A



LEGEND

 Cadastral Boundaries

Risk Rating

-  Low
-  Medium
-  High

Title:

**Regional Planning Zone and Land Parcel Assessment
2050 Storm Tide**

BMT endeavours to ensure that the information provided in this map is correct at the time of publication. BMT does not warrant, guarantee or make representations regarding the currency and accuracy of information contained in this map.

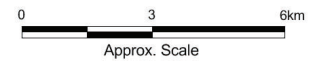


Figure:

Rev:

A





LEGEND

 Cadastral Boundaries

Risk Rating

-  Low
-  Medium
-  High

Title:

**Regional Planning Zone and Land Parcel Assessment
2100 Storm Tide**

BMT endeavours to ensure that the information provided in this map is correct at the time of publication. BMT does not warrant, guarantee or make representations regarding the currency and accuracy of information contained in this map.

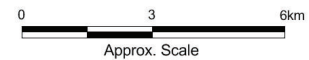


Figure:

Rev:

A



Appendix C Regional Risk Assessment – Erosion Hazard Area (Erosion & Sea Level Rise)



LEGEND
 Cadastral Boundaries

Risk Rating
 Low
 Medium
 High
 Extreme

Title:
**Regional Planning Zone and Land Parcel Assessment
 Present Day Erosion and Sea Level Rise**

Figure:
 Rev:
A

BMT endeavours to ensure that the information provided in this map is correct at the time of publication. BMT does not warrant, guarantee or make representations regarding the currency and accuracy of information contained in this map.



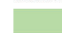
Filepath: \\B23628_LJgc_FORC_CHAS_Phase3to8_mpb\DRG\RegionalRiskAssessment\COA_318_200624_Zone1_PC_SLR_RiskRating.WOR



LEGEND

 Cadastral Boundaries

Risk Rating

-  Low
-  Medium
-  High
-  Extreme

Title:

**Regional Planning Zone and Land Parcel Assessment
2050 Erosion and Sea Level Rise**

BMT endeavours to ensure that the information provided in this map is correct at the time of publication. BMT does not warrant, guarantee or make representations regarding the currency and accuracy of information contained in this map.

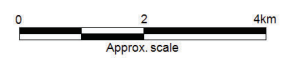


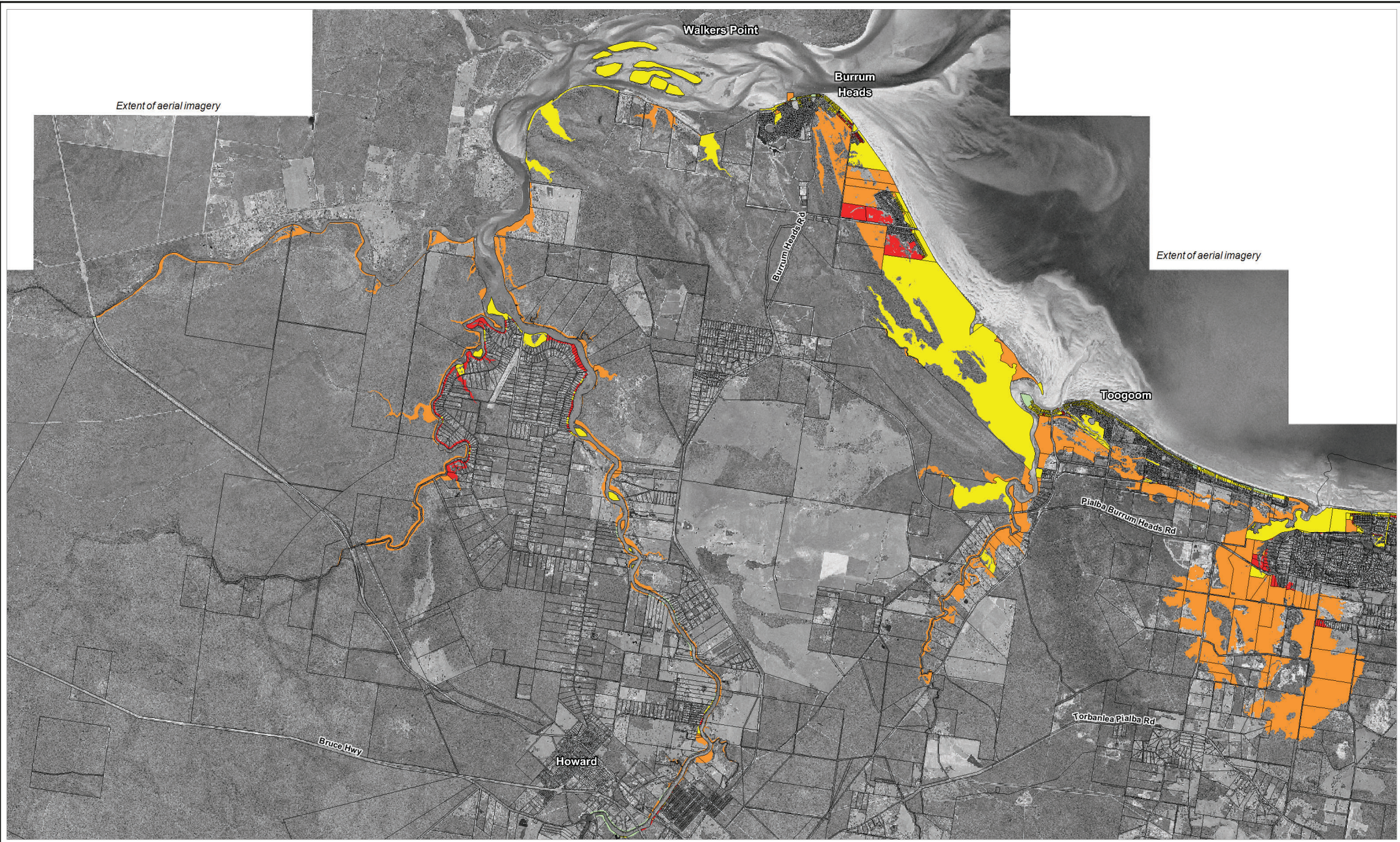
Figure:

Rev:

A



Filepath: \\B23628_L\jgc_FORC_CHAS_Phase3to8_mpb\DRG\RegionalRiskAssessment\COA_319_200624_Zone1_2050_SLR_RiskRating.WOR



LEGEND

 Cadastral Boundaries

Risk Rating

-  Low
-  Medium
-  High
-  Extreme

Title:

**Regional Planning Zone and Land Parcel Assessment
2100 Erosion and Sea Level Rise**

BMT endeavours to ensure that the information provided in this map is correct at the time of publication. BMT does not warrant, guarantee or make representations regarding the currency and accuracy of information contained in this map.

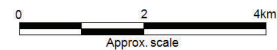


Figure:

Rev:

A





LEGEND
 Cadastral Boundaries

Risk Rating
 Low
 Medium
 High
 Extreme

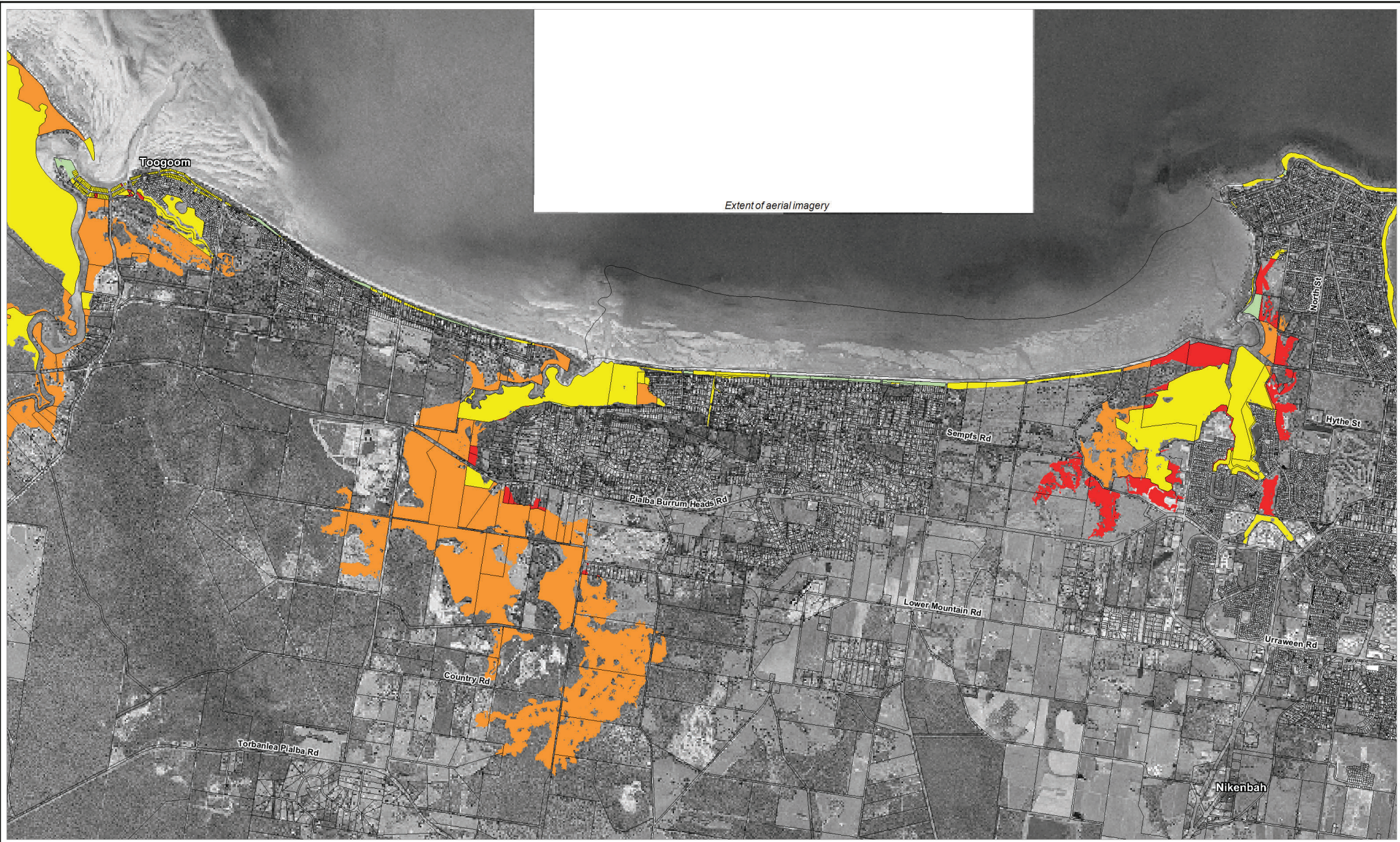
Title:
**Regional Planning Zone and Land Parcel Assessment
 Present Day Erosion and Sea Level Rise**

Figure:
 Rev:
A

BMT endeavours to ensure that the information provided in this map is correct at the time of publication. BMT does not warrant, guarantee or make representations regarding the currency and accuracy of information contained in this map.



Filepath: \\B23628_1\jgc_FCRC_CHAS_Phase3to8_mpb\DRG\RegionalRiskAssessment\COA_321_200624_Zone2_PC_SLR_RiskRating.WOR



LEGEND
 Cadastral Boundaries

Risk Rating
 Low
 Medium
 High
 Extreme

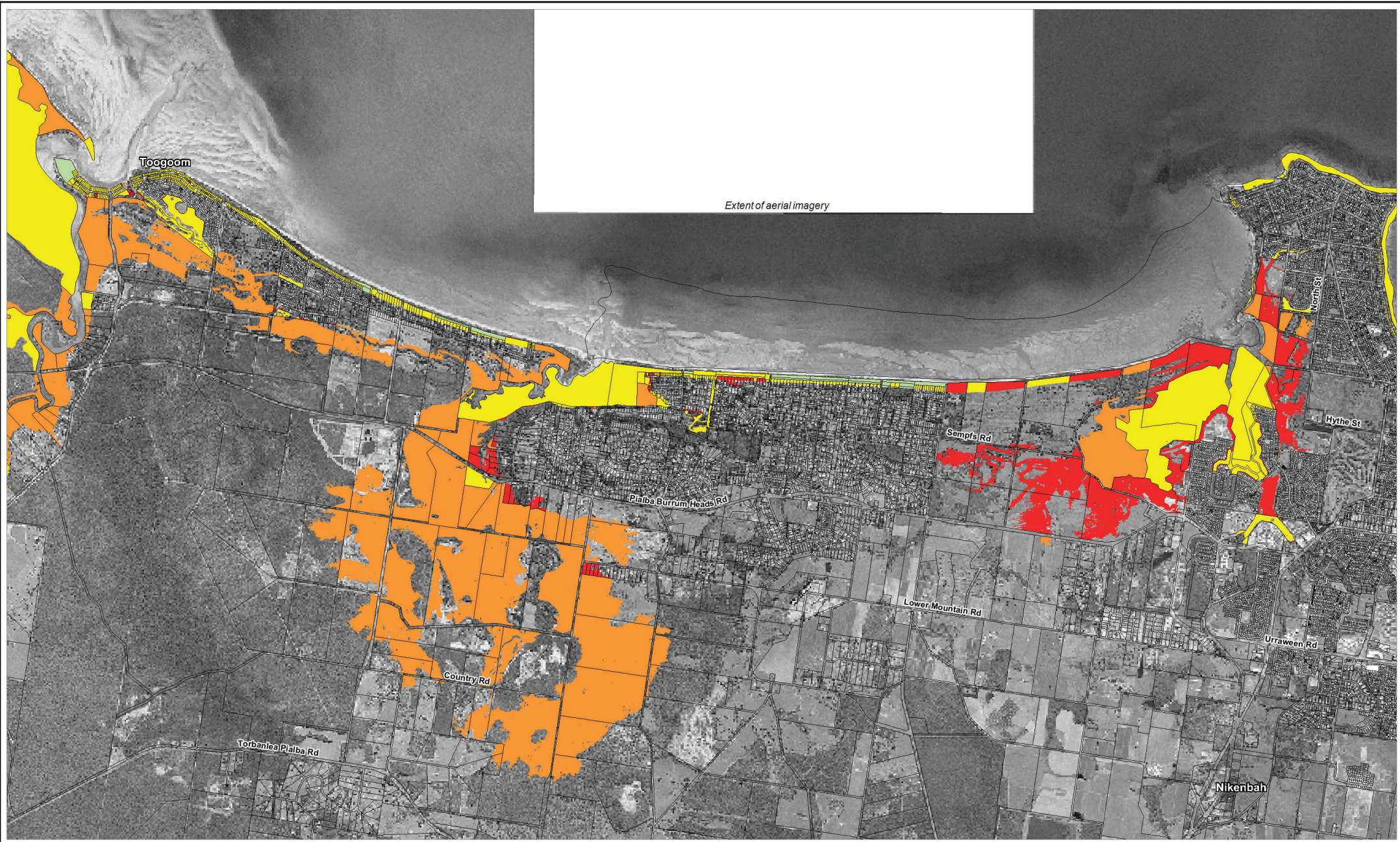
Title:
**Regional Planning Zone and Land Parcel Assessment
 2050 Erosion and Sea Level Rise**

Figure:
 Rev:
A

BMT endeavours to ensure that the information provided in this map is correct at the time of publication. BMT does not warrant, guarantee or make representations regarding the currency and accuracy of information contained in this map.



Filepath: \\B23628_1\jgc_FCRC_CHAS_Phase3to8_mpb\DRG\RegionalRiskAssessment\COA_322_200624_Zone2_2050_SLR_RiskRating.WOR



LEGEND

Cadastral Boundaries

Risk Rating

- Low
- Medium
- High
- Extreme

Title:

**Regional Planning Zone and Land Parcel Assessment
2100 Erosion and Sea Level Rise**

BMT endeavours to ensure that the information provided in this map is correct at the time of publication. BMT does not warrant, guarantee or make representations regarding the currency and accuracy of information contained in this map.

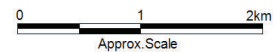


Figure:

Rev:

A





Extent of aerial imagery



LEGEND
 Cadastral Boundaries

Risk Rating
 Low
 Medium
 High
 Extreme

Title:
**Regional Planning Zone and Land Parcel Assessment
 Present Day Erosion and Sea Level Rise**

Figure:
A

BMT endeavours to ensure that the information provided in this map is correct at the time of publication. BMT does not warrant, guarantee or make representations regarding the currency and accuracy of information contained in this map.



Filepath: \\B23628_1\jgc_FCRC_CHAS_Phase3to8_mpb\DRG\RegionalRiskAssessment\COA_324_200624_Zone3_PC_SLR_RiskRating.WOR