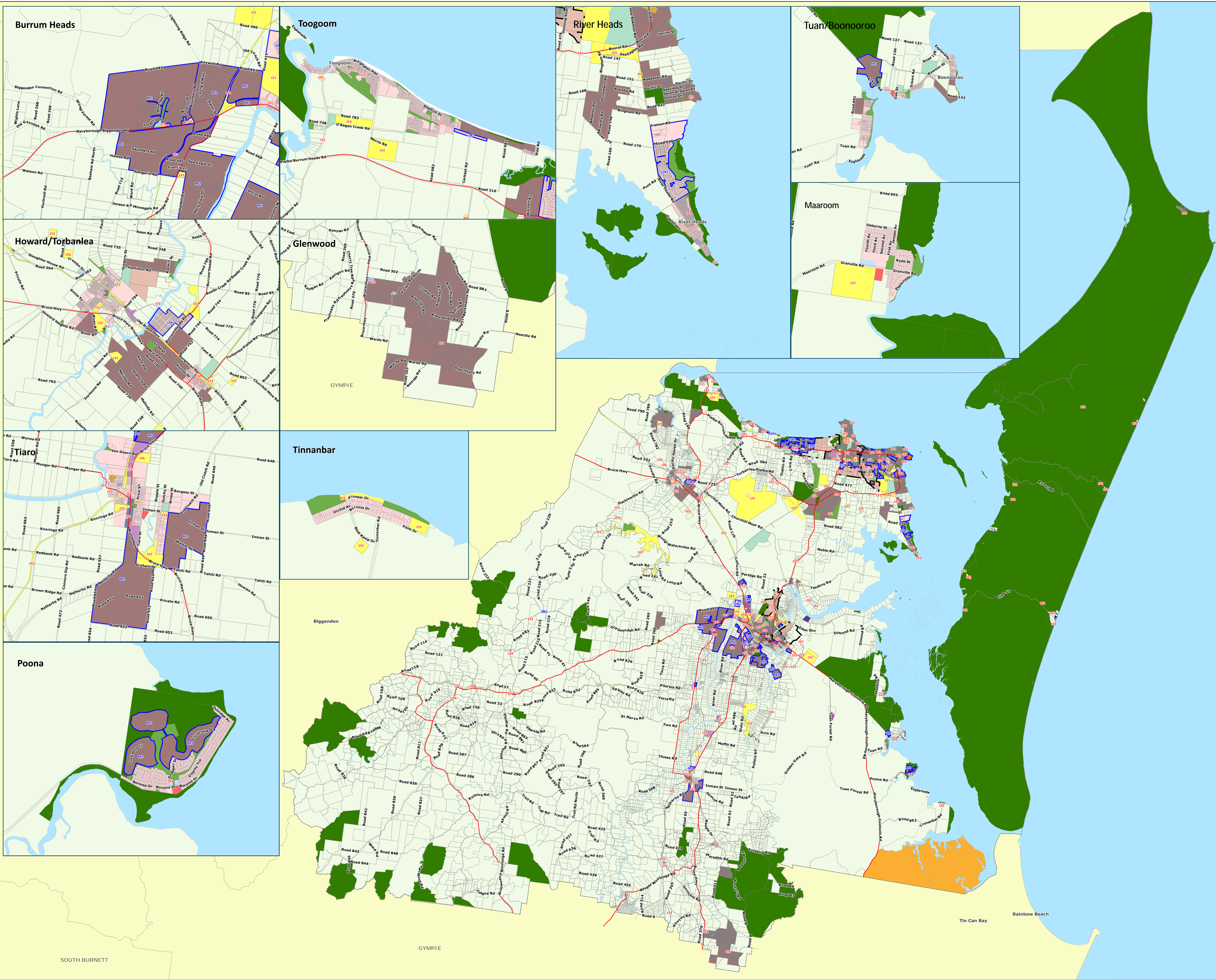


Legend

- Planning Zones**
- Low Density Residential
 - Medium Density Residential
 - High Density Residential
 - Principal Centre
 - Local Centre
 - Neighbourhood Centre
 - Low Impact Industry
 - Medium Impact Industry
 - High Impact Industry
 - Waterfront and Marine Industry
 - Sport and Recreation
 - Open Space
 - Environmental Management and Conservation
 - Community Facilities
 - CF1 - Education & Training Facilities
 - CF2 - Government Purpose & Public Utilities
 - CF3 - Hospitals & Medical Services Facilities
 - CF4 - Community & Cultural Facilities
 - CF5 - Telecommunication Facilities
 - CF6 - Cemetery
 - Emerging Communities
 - District Centre
 - Limited Development (Constrained Land)
 - Mixed Use
 - Rural
 - Rural Residential
 - Specialised Centre
- Zone Precincts**
- Local Plan Areas
 - Other Local Government Boundaries
 - Fraser Coast Regional Council Boundary
 - DCDB Land Parcels
 - DNRM Release 06/03/2018



Disclaimer
While every care is taken to ensure the accuracy of this product Fraser Coast Regional Council makes no representation or warranty about the accuracy, reliability, completeness or suitability for any purpose of the information. Users are responsible for ensuring that the information is up to date and for any errors or omissions. Fraser Coast Regional Council is not liable for any loss or damage, including consequential or special damages, arising from the use of this information.

© Crown and Council Copyright Reserved
Geocoordinates: Datum of Australia 1994 (GDA94) 11/06/2018

