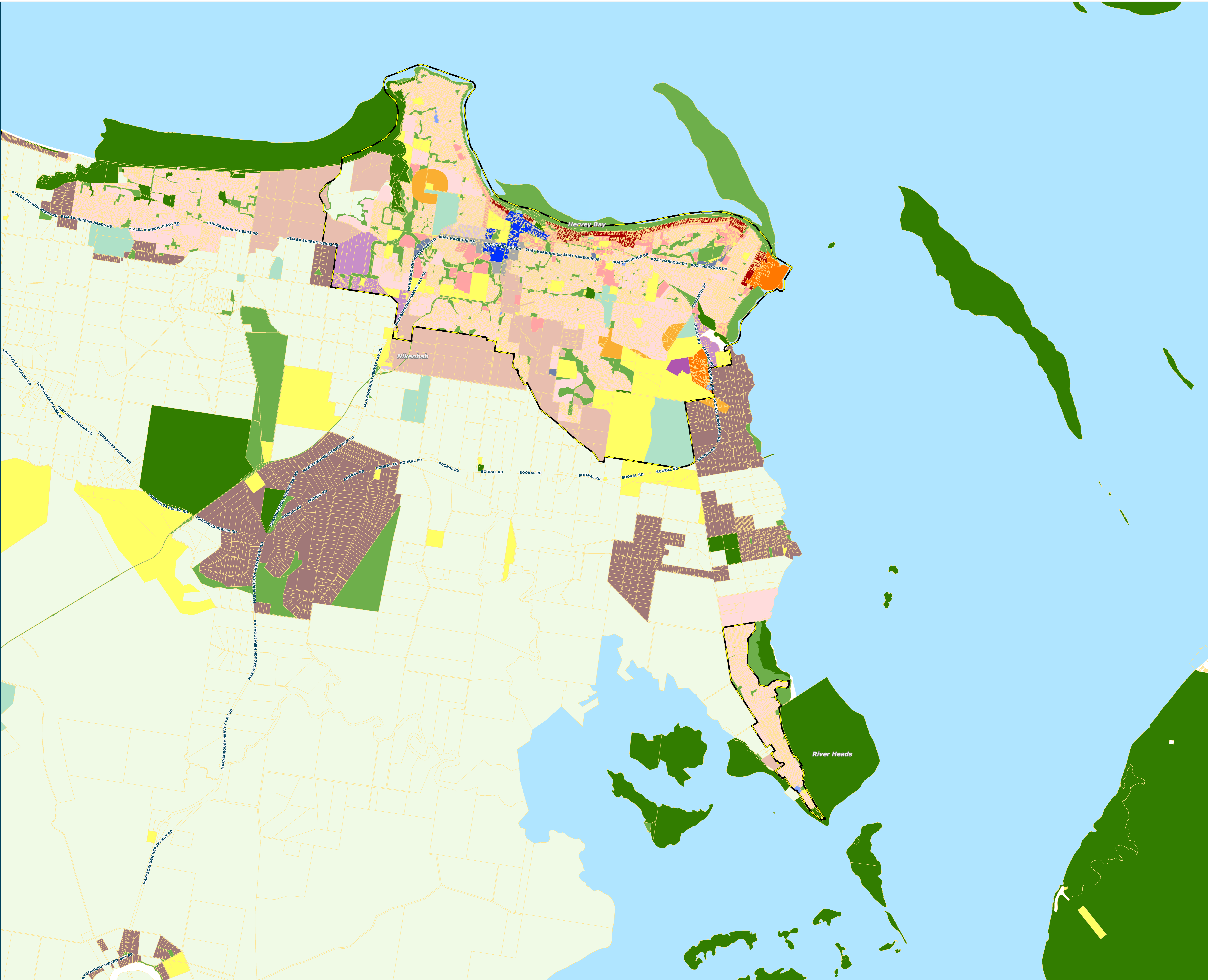


Legend

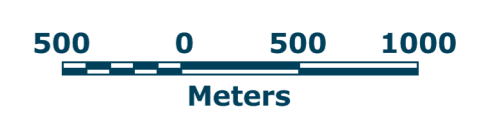
- Priority Infrastructure Area**
- Planning Zones**

 - Low Density Residential
 - Medium Density Residential
 - High Density Residential
 - Principal Centre
 - Local Centre
 - Neighbourhood Centre
 - Low Impact Industry
 - Medium Impact Industry
 - High Impact Industry
 - Waterfront and Marine Industry
 - Sport and Recreation
 - Open Space
 - Environmental Management and Conservation
 - Community Facilities
 - CF1 - Education & Training Facilities
 - CF2 - Government Purposes & Public Utilities
 - CF3 - Hospitals & Medical Services Facilities
 - CF4 - Community & Cultural Facilities
 - CF5 - Telecommunications Facilities
 - CF6 - Cemetery
 - Emerging Communities
 - District Centre
 - Limited Development (Constrained Land)
 - Mixed Use
 - Rural Residential
 - Specialised Centre

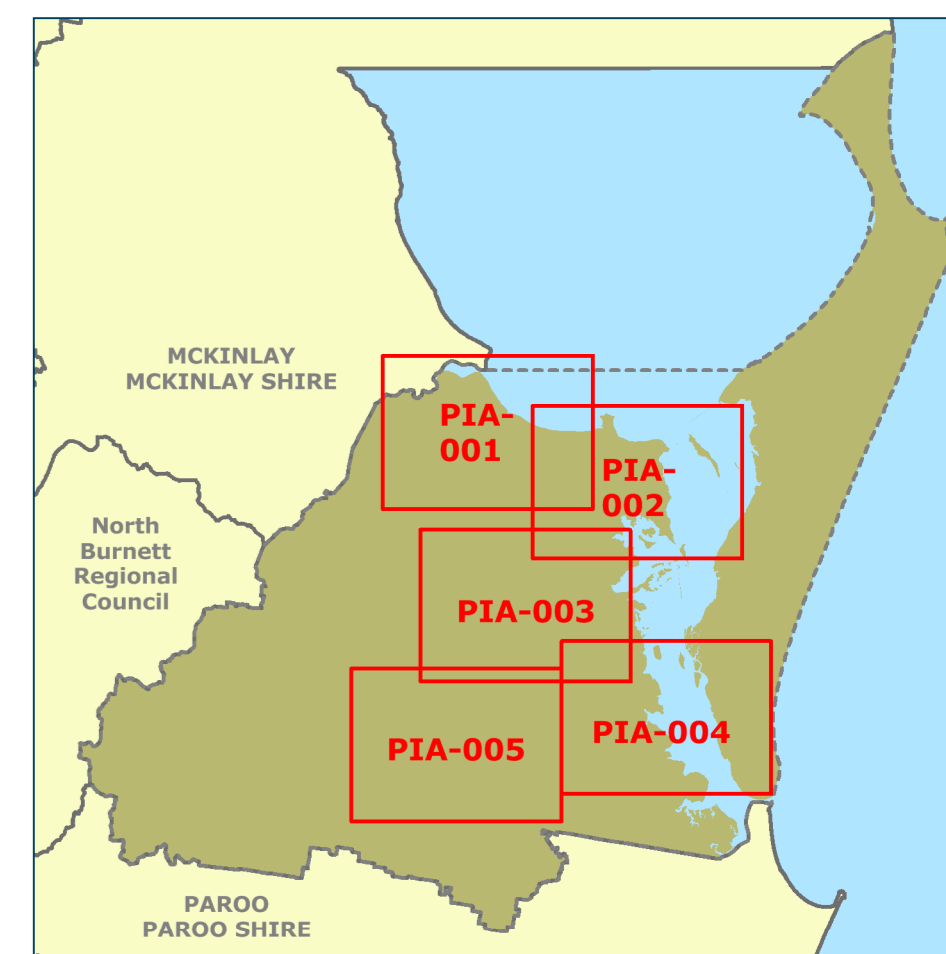
- DCDB**
- Other Local Government Boundaries**
- Ocean**



Disclaimer: While every care is taken to ensure the accuracy of this product Fraser Coast Regional Council makes no representation or warranty about the accuracy, reliability, completeness or suitability for any particular purpose and declines all responsibility and liability (including without limitation, liability or negligence) for all damages, losses, damages (including indirect or consequential damage) and costs (including reasonable legal costs) in any way arising from the use of this product. © Crown and Council Copyright Reserved 12/05/2016
 Government Datum of Australia 1994 (GDA94)



Approx Scale @ A0 1:32,000



Sheet Map Index