



Fraser Coast
REGIONAL COUNCIL

Parking Information Booklet

MANAGING PARKING

Why do rules exist about parking?

Parking rules and regulations are used throughout the Fraser Coast Regional Council area to provide a consistent approach to meet public expectations and to maintain the safety of all road users and pedestrians.

The Queensland Road Rules and other parking legislation provide a clear set of standards for anyone parking a vehicle in Fraser Coast.

Illegal parking can have numerous effects on the public and public infrastructure such as:

- restrict the visibility of other road users,
- cause traffic congestion,
- damage underground infrastructure (footpath parking),
- impede pedestrian access to safely use the nature strip or footpath,
- restrict general services such as waste collection and more seriously, emergency services.

Planning for our future

Fraser Coast is a rapidly growing locality in the booming Wide Bay Burnett Region. The Queensland Government has forecast that the population of the Fraser Coast Region will reach 144,000 by 2041.

Council takes its responsibility to manage parking matters very seriously and envisage that this booklet will assist the community who have identified that it is an area that Council should focus its efforts and resources on.

Council aims to ensure that parking is managed as efficiently as possible, to ensure public safety and amenity, promote turnover and allow for the effective loading of goods and passengers while supporting an increase in the use of sustainable transport modes such as walking, cycling and public transport.

Ultimately, the Queensland Road Rules apply to all drivers in the Fraser Coast Region and this booklet aims to provide clarity to the community on how parking is managed by Fraser Coast Regional Council.



TABLE OF CONTENTS

Understaing Parking Rules	6
Safe Parking Rules	8
School Zone parking.....	12
Special Use & Loading Zone Parking	14
Penalty Infringement Notices (Fines).....	15

UNDERSTANDING PARKING RULES

Advice to help you park safely and lawfully

- Australian disability parking scheme permit holders can park free of charge for an unlimited amount of time where the parking limit is 30 minutes or more. Where the time limit is less than 30 minutes, they can park for up to 30 minutes.
- Unless otherwise signed, vehicles may stop in a loading zone for up to 2 minutes if dropping off/picking up passengers or for up to 20 minutes when dropping off/picking up goods.
- On-street parking within the Hervey Bay & Maryborough CBD's is intended for short term parking only. For longer stays please consider using public transport or parking at an off-street parking location.
- Do not stop on a yellow edge line, in no stopping zones, bus stops and zones, taxi zones or other special use zones.
- Do not park across driveways, kerb ramps, footpaths or on the nature strip of a road.
- There are several traffic and parking control areas across the Fraser Coast. Some locations have different restrictions at different times of the day. Make sure that you read the signs carefully so that you understand the restrictions that apply.

Parking signs

Parking signs all follow a clear set of guidelines across the State. When reading parking signs, you should keep in mind the following:

- Green parking signs will tell you when you are allowed to park within certain conditions, such as the amount of time, which days, and what times.
- Red parking signs will tell you when you are not allowed to park unless you are driving a certain type of vehicle or performing a specific action, like dropping off or picking up passengers.
- Outside of signed times, the parking conditions do not apply.

Below are some examples of common parking signs you will see throughout the Fraser Coast area.



Parking signs let you know where you can park on a section of the road. The sign displays parking information you need to know, they include how long you can park, where you can park and hours and days of the week that the parking rules apply.



You may stop in a no parking zone if you are dropping off or picking up passengers or goods.

You must not leave your vehicle unattended (i.e. move more than 3 metres away), and you must not stay for longer than 2 minutes.



A driver must not stop in a no stopping zone, meaning you may not stop in this area even if only to drop off or collect passengers.

No stopping areas may be delineated with a continuous yellow line marked on the road.



At times, no stopping zones can be prescribed by times.

In this case a driver must not stop in a no stopping zone between 7 to 9 am and 2 to 4 pm on school days.



The passenger loading zone sign indicates an area designated for picking up or dropping off passengers. You must not remain in the zone for longer than signed (generally 2 minutes).

This sign often displays times during which the loading zone applies.



You must not stop within a bus zone at any time.

This zone is only available to buses.

SAFE PARKING RULES

Fraser Coast Regional Council Officers are authorised to enforce the Queensland Road Rules. These rules are consistent across the state and all drivers are required to follow them.

Disability parking

Disability parking spaces are provided to help people with limited mobility get in and out of their vehicles. Motorists are not permitted to stop in these spaces without displaying a valid Australian Disability Parking Scheme permit. If you hold an Australian Disability Parking Scheme permit, you are entitled to park in:

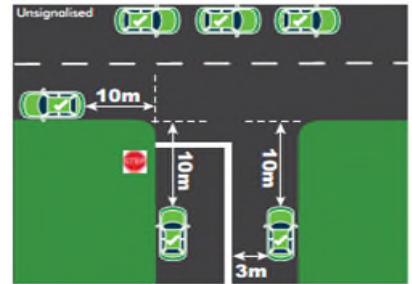
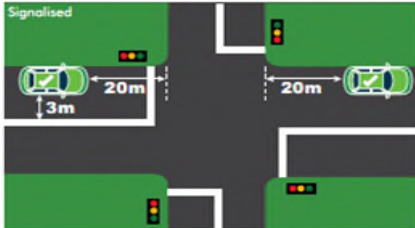
- any space provided for a person with a disability in an on-street or off-street parking location, including shopping centres and hospitals.
- where the time limit specified by a sign is:
 - less than 30 minutes, you can park for up to 30 minutes.
 - 30 minutes or more, you can park for an unlimited amount of time.

Australian Disability Parking Scheme permit holders are not to park in restricted parking zones such as clearways, no stopping zones, loading zones and bus zones.



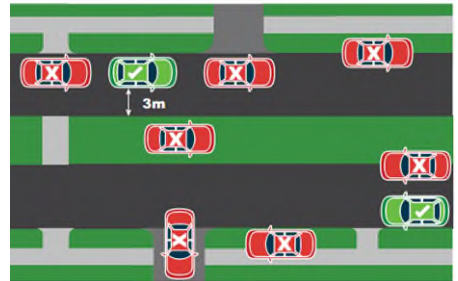
Parking near intersections

You should not stop within 20 metres of traffic lights, or within 10 metres of an un-signalised intersection, unless signed otherwise. You can park on the far side of a T-intersection without a traffic light on the continuing road unless there are signs or line markings indicating otherwise.



Parking on footpaths

Of all the parking complaints made to Council by the public, parking on the footpath is the highest. The Queensland Road Rules states that a driver must not stop a vehicle on a bicycle path, footpath, shared path or dividing strip, or a nature strip adjacent to a length of road in a built-up area, unless the driver is permitted by a parking control sign.



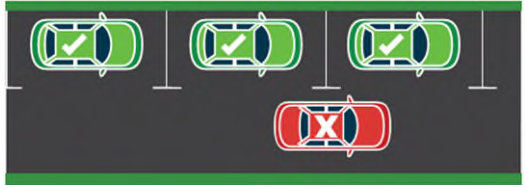
Blocking driveways

A driver must not stop on a road in a position that obstructs access by vehicles or pedestrians to or from a footpath ramp or a similar way of access to a footpath, or a bicycle path or passageway.



Double parking

Double parking is very dangerous and puts people at risk as they try and navigate between parked cars. There is always another option which is safer than double parking.



Parking near bus stops

Leaving enough space for buses is important to ensure passengers, including the elderly and people with prams or mobility issues, can be safely picked up and dropped off. Unless signed otherwise, do not stop or park within:

- 20 metres of the approach to the bus stop sign
- 10 metres of the departure side of the bus stop sign

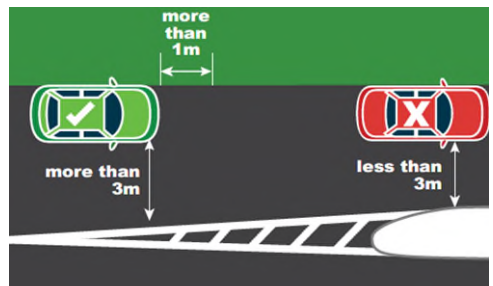


Parallel parking

On roads where vehicles are parked parallel on both sides of the road, drivers of parked vehicles must leave a space of at least three (3) metres clearance between their vehicle and any vehicle parked on the opposite side of the road.



Where there is a solid white line in the middle of the roadway, drivers of parked vehicles must leave a space of at least three metres clearance between their vehicle and the solid white line.



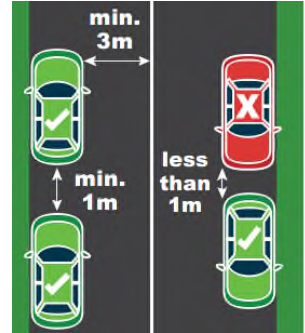
Parallel parking (continued)

A minimum distance of at least one metre must be left between the front and rear of two parallel parked vehicles.

Where a parked vehicle is causing an obstruction and there is less than three metres clearance, enforcement action may be taken against the owner or driver of the vehicle parking second if this can be established.

A minimum space of at least three metres must be maintained between a vehicle and a dividing strip.

It is illegal to park your car in a street that has traffic flowing in both directions, where the vehicle is facing oncoming traffic.



Heavy or Long vehicle parking

The *Transport Operations (Road Use Management—Road Rules) Regulation 2009* defines a heavy or long vehicle as a vehicle with a gross mass of 4.5 tonnes or more or a vehicle that is longer than 7.5 meters.

A heavy or long vehicle must not park on a road in a built-up area, or in a public place, for more than one hour unless the vehicle is engaged in the delivery or collection of goods, materials or passengers to properties abutting the road or to the public place for the entire period.

Parking your heavy or long vehicle in a road-related area, may incur an on the spot fine.

SCHOOL ZONE PARKING

There is a large volume of schools in the Fraser Coast Region from small rural schools to large colleges who take students from prep to year 12.

Council utilises various strategies to educate motorists and discourage illegal parking in school zones to ensure the safety of school children and the public. A school zone is a time-based linear speed zone that is installed to regulate vehicle speeds in the vicinity of schools.

Council Officers inspect parking on roads around schools, especially during the peak morning drop off and afternoon pick up times. Council Officers generally apply strict adherence to the Queensland Road Rules when conducting a school zone inspection due to the safety risk to young children and other pedestrians and road users.

General offences detected in school zones include:

- stopping in a bus zone
- stopping in a parking area for people with disabilities
- stopping in a no stopping area
- obstructing access to and from a driveway
- stopping in a loading zone
- double Parking
- stopping on a footpath, dividing strip or nature strip
- parking for longer than indicated on a permissive parking sign.



School Loading Zone Do's and Don'ts

DO

- ✓ Use the zone like a quick moving taxi rank.
- ✓ Move to the head of the queue or move forward as space becomes available.
- ✓ Teach children to move promptly to the vehicle.
- ✓ Load and unload passengers at the front of the line.
- ✓ Stay in the car if you are the driver, unless loading or unloading baggage or passengers.

DON'T

- ✗ Park for more than two minutes – you can be fined for this.
- ✗ Double park.
- ✗ Leave the vehicle, except to load or unload.
- ✗ Queue through pedestrian crossings or in no stopping zones.



SPECIAL USE & LOADING ZONE PARKING

Special use zones

There are several zones in place across Fraser Coast that provide access for specific use or for specific vehicles. Some of the more common special use zones are:

Bus Zones

Used by scheduled bus services to pick up and set down passengers.

Some bus zones are allocated as short-term holding zones or parking for buses and coaches.



Taxi Zones

Only taxis are permitted to stop in Taxi Zones.

Taxi Zones are designated locations where passengers can be picked up and dropped off by taxis.



Mail Zones

Authorised postal vehicles are permitted to stop in these areas. All other motorists are not permitted to stop in Mail Zones, even when using post boxes or visiting Australia Post offices.



Loading Zones

Different types of loading zones are in place across Fraser Coast. Loading zones are located and operate at times where there is a demand for a particular activity such as passenger loading or delivering goods. This table provides a quick reference guide to using loading zones and the time limits that apply.

	LOADING ZONE COMMERCIAL VEHICLES 20 MINS ONLY	LOADING ZONE COMMERCIAL VEHICLES 20 MINS ONLY	LOADING ZONE COMMERCIAL VEHICLES 20 MINS ONLY	LOADING ZONE PASSENGERS 2 MINS ONLY
 Passenger loading /unloading	2 minutes	2 minutes	2 minutes	2 minutes Only applies during the days and hours mentioned.
 Goods loading non-commercial vehicles	20 minutes	20 minutes	20 minutes	20 minutes
 Goods loading Commercial vehicles	30 minutes	30 minutes	20 minutes	20 minutes

PENALTY INFRINGEMENT NOTICES (FINES)

Fines must be served in accordance with the State Penalties Enforcement Act 1999 to:

- the owner of the vehicle, or
- the person driving the vehicle who committed the offence, or
- a person named in a Known User Declaration or a Sold Vehicle Declaration.

Fines may be served by:

- personal service (handed to the driver of the illegally parked vehicle), or
- attaching the fine to the offending vehicle, or
- by post.

Warnings

Council officers are under no legal obligation to issue a warning notice before the issuance of a fine. Officers may use their discretion in response to identified parking breaches with respect to risk to public safety, proportionality, consistency, transparency, and fairness.

If the subject vehicle has been issued a warning for the same or similar offence within the previous twelve (12) months, a fine will be issued.

Photographs

With the availability of digital camera technology, there is an expectation by the courts that photographs are taken of vehicles involved in alleged parking offences, where practicable, for presentation as evidence in court, if required.

It is lawful for a Council Officer to take a photograph of a vehicle in a public place.

WHAT TO DO IF YOU RECEIVE A FINE

Option 1 – Pay the fine in full.

Payment can be made by one of the following options:

- Returning the notice with a cheque or money order for the full amount to PO Box 1943, Hervey Bay Qld 4655.
- In person at one of Council's Administration Centres in Hervey Bay or Maryborough, or
- Via credit card over the phone by contacting Council on 1300 79 49 29.

Option 2 – Apply to pay the fine by instalments (Fines over \$200)

If the infringement has a fine of \$200 or more, you may apply within 28 days of the date on the notice to pay by instalments of \$60 per month.

To apply to make instalments, please submit your notice along with your first payment of \$60 to one of the following:

- Returning the notice with a cheque or money order to PO Box 1943, Hervey Bay Qld 4655.
- In-person at one of Council's Administration Centres in Hervey Bay or Maryborough.

After making this application, an instalment plan will be sent to you by the State Penalties Enforcement Registry (SPER). Failure to comply with the instalment plan will result in enforcement by SPER and you will be required to pay additional fees.



Option 3 – Lodge a Statutory Declaration (Only Vehicle related fines)

All infringement notices are sent to vehicle owners. Owners are considered to have committed the offence. If you were not responsible for the vehicle at the time, you may be able to remove your responsibility for the infringement. You must fill out a statutory declaration to show the vehicle:

- was being used illegally, or
- was being used by another person (nominated by you), or
- has been sold or otherwise disposed of.

You must send your statutory declaration to council within 28 days after the date the notice was issued. Council may begin to prosecute a person who is identified as the offender. If the offender cannot be identified, council may prosecute you.

Option 4 – Apply for a review

Council may consider the withdrawal of a fine in extenuating circumstances.

These include but are not limited to:

- medical emergencies,
- vehicle malfunction,
- the circumstances leading up to the issuing of the notice were unavoidable.

Fines will not be withdrawn for the following reasons:

- financial hardship,
- being unaware of the law or not seeing the sign,
- disagreeing with the law,
- believing that the offence is trivial or did not cause hazard,
- running out of petrol,
- stopping briefly in a restricted zone.

Option 4 – Apply for a review (continued)

For council to consider a review of a fine, you are required to make application using the Request to Waive/Withdraw form available on Councils website. All supporting evidence must be attached.

Upon receipt of your request for withdrawal your infringement will be placed on hold. You will be notified of the outcome by your preferred method of correspondence.

You must submit a request for review within 28 days of issue of the infringement.

Option 5 – Elect to have a Court Hearing

Your election may be made by completing the reverse side of the Infringement issued and returning to the address:

- Returning the notice to PO Box 1943, Hervey Bay Qld 4655.
- In-person at one of Council's Administration Centres in Hervey Bay or Maryborough.

If your election for a Court hearing is received within 28 days, a prosecution against you may be commenced in a Magistrates Court.

You are responsible for obtaining your own legal advice before the court hearing and if found guilty of the offence may be required to pay costs. If you do not appear at the set date for the hearing, the matter may be heard in your absence.



Fraser Coast
REGIONAL COUNCIL

1300 79 49 29

enquiry@frasercoast.qld.gov.au

77 Tavistock Street, Hervey Bay
211-213 Adelaide Street, Maryborough
PO Box 1943, Hervey Bay
Queensland, Australia

www.frasercoast.qld.gov.au