



MINUTES

FRASER COAST MARY TO BAY RAIL TRAIL ADVISORY COMMITTEE

COUNCIL ADMINISTRATION CENTRE, 77 TAVISTOCK STREET
8 FEBRUARY, 2024 COMMENCING AT 4.00PM

PRESENT:

- Cr David Lewis (Chair)
- Tracey Genrich, Manager Community Development & Engagement FCRC
- Max Voigt – Fraser Coast Bugs Representative
- Martin Simons – General Manager FCTE
- John Williams – Fraser Coast Wildlife Preservation Society Representative
- Steve Case – Fraser Coast Cycling representative
- Alan Whyborn – community representative
- Andy Riley – community representative
- Craig England – Manager – Rail Corridor Management – Department
- David Gleadow – Senior Advisory – Rail Corridor Management – Department of Transport & Main Roads
- Desley O’Grady – Rail Trails Australia (non-voting invited member)

APOLOGIES

- Cr Phil Truscott
- Davendra Naidu – Director Infrastructure Services FCRC
- Emma Baird – community representative
- Ken Diehm – Chief Executive Officer FCRC (Guest apology)
- Keith Parsons – Director Organisational Services FCRC (Guest apology)

GUESTS IN ATTENDANCE

Gerard Carlyon – Director Strategy, Community & Development FCRC
Kieren Stoneley – FCRC Sport & Recreation Coordinator
Rob Hazzard – Executive Manager, Capital Delivery (Part Meeting Only)
Craig Bottcher – Manager Design, Capital Delivery (Part Meeting Only)

AGENDA ITEMS

1. Welcome and Acknowledgement to Country

David welcomed all attendees and delivered an Acknowledgement to Country on behalf of the Advisory Committee.

2. Apologies

A full list of apologies is listed above.

3. Welcome to Desley O’Grady – Rail Trails Australia representative

The Committee welcomed Desley O’Grady to her first meeting with the Advisory Committee and looks forward to having Desley’s experienced input into the Mary to Bay Rail Trail project.

4. Previous Meeting – Action List

The Committee reviewed the Action List of items from previous meetings. The action list has been updated to reflect comments and updates provided at the meeting and is attached in its updated version.

5. Agenda Items

1. **Design Options – Road Crossings/Rail Trail (Hervey Bay Urban Areas Sections)**

Craig Bottcher advised that Council currently had two projects that it was seeking feedback from the Advisory Committee as follows:-

- a) Construction of the Elizabeth Street crossing; and
- b) Concept Design of a number of road crossings within the Hervey Bay urban area of the Rail Trail.

Craig and Rob Hazzard provided information to the Advisory Committee members in relation to the two projects.

The members of the Advisory Committee requested that a workshop style meeting be organised so that adequate time was available for a more comprehensive review of the projects.

Recommendation

That an invitation be forwarded to all members of the Advisory Committee to a meeting with Council Infrastructure Services staff to discuss the construction of Elizabeth Street crossing and concept design of a number of road crossings within the Hervey Bay urban area of the Rail Trail.

2. **DTMR – Funding Opportunity Discussion**

Craig England advised the Advisory Committee that his Rail Trail team had been able to secure funding in the vicinity of \$100,000 from the State Government’s 2023/2024 budget.

Craig requested feedback from the Advisory Committee as to what their priorities/projects for the funding allocation. A number of potential projects were discussed by the Advisory Committee

including directional signage, Stockyard Creek & Black Swamp Creek Crossings, crossing of Maryborough/Hervey Bay Road to access the Piggford Lane section.

As part of the discussion DTMR advised that their Roads department were in the process of engaging a consultancy to investigate a suitable crossing outcome for the Maryborough/Hervey Bay Road and crossing of Torbanlea Road at Takura.

Recommendation

That the Department of Transport and Main Roads (Rail Trail Corridors) be requested to quarantine the \$100,000 funding allocation for use towards addressing the Mary to Bay Rail Trail Advisory Committee's request for minimal (low impact) creek crossing solutions at Stockyard Creek and Black Swamp Creek, pending further discussion on the identification of the minimal (low impact) solution at a future meeting of the Rail Trail Advisory Committee.

3. Discussion re Minutes of Special Meeting 30 November, 2023

The Committee discussed the minutes from the Special Meeting held on 30 November, 2023 and agreed that the following amendments should be made:-

Item 3.1 New Colton Pty Ltd – Proposed Alternative Route Rail Trail

Add an additional dot point to the section "Rail Trail continuing on its original route (through the Mine) until construction of the mine commences" as follows:-

- Michael Gray agreed to consider the terms of section 276(1)(e) of the Act.

Add an additional dot point to the section "Halliburton Report – Alternative Route Proposal" as follows:-

- Notwithstanding the constraints, this option should remain available for consideration, depending on the outcomes with other alternatives.

Amend the "Action" for this item to read as follows:-

That further investigations be carried out as above, and Tracey Genrich, in consultation with other internal Council Officers, prepare and table a report for a future Council meeting which includes information on the project, proposed alternative route and a recommendation from the Advisory Committee that Council authorise the Chief Executive Officer, or his delegate, to negotiate further with New Colton Pty Ltd in relation to agreement and progression of the Churchill Mines Road/Peridge Road alternative route.

Recommendation

That the Minutes of the Special Meeting held on 30 November, 2023 be amended to reflect the above amendments.

4. Communications – FCRC Community Engagement Hub & FCRC Website Access for public sharing of Advisory Committee meeting minutes

Tracey Genrich confirmed that the Engagement Hub page for use by Mary to Bay Rail Trail Advisory Committee members only will be available in the near future.

Tracey also confirmed that the previous minutes of the Advisory Committee were public documents as they had been published in Council Meeting Agendas and therefore could be published on Council and Fraser Coast Bicycle User Group website for the information of members of the public.

Recommendation

That Tracey Genrich organise for a copy of the Mary to Bay Rail Trail Advisory Committee minutes to be published on Council's website in the appropriate location and send a pdf copy of the minutes to Max for posting on the Fraser Coast Bicycle User Group website.

5. Colton Mine Diversion

The Advisory Committee noted Council's resolution of its Meeting held in January, 2024 as included in the Advisory Committee Agenda documentation.

Tracey Genrich confirmed that an email had been forwarded to New Colton Pty Ltd in January asking for them to review and provide their response in relation to Section 276(1)(e) of the Mineral Resources Act and that to date no response had been received.

Discussion was held as to whether this item should be a priority for investigation and Tracy advised that given there was a recommendation from the Advisory Committee from its November, 2023 meeting, the Advisory Committee should make a further recommendation to Council should it wish to amend its view. No request for an amendment to this item was received at the meeting.

6. Creek Crossing SubGroup – Notes from 31/1/2024 Meeting

The Advisory Committee noted the Notes from the Stockyard Creek/Black Swamp Creek Subgroup meeting held on 31 January, 2024 which were circulated via email to all Advisory Committee members on 5 February, 2024.

General discussion occurred in relation to the requirements of the relevant legislation, potential crossing solutions, the need for approvals and environmental assessment of crossing solutions etc.

It was agreed at the meeting that a report should be tabled at a future Council Meeting recommending action identify a suitable interim solution to address the current situation at the creek crossings. It was requested that the next subgroup meeting be held as soon as practical to keep this item progressing.

The Advisory Committee noted the SubGroup's recommendation in relation to a long term solution and agreed that further discussion on this item should occur at future meetings of the Advisory Committee.

Recommendation

That Council be advised that the Mary to Bay Rail Trail Advisory Committee recommends the following actions in relation to suitable crossing options for Stockyard Creek and Black Swamp Creek:-

That, to address the current situation at the Stockyard Creek and Black Swamp Creek crossing the Mary to Bay Rail Trail Advisory Committee recommend that Council enter into negotiations with the Department of Transport and Main Roads and the Mary to Bay Rail Trail Advisory Committee to:-

- a) Identify a minimal (low impact) works solution for the two crossings to improve the current situation at these two crossings, noting that the gradients be unchanged and as per the existing onsite conditions, and the solution to include appropriate signage to mitigate risk.
- b) Have any environmental assessment and approvals undertaken to facilitate the approved interim solution; and
- c) Have the Department of Transport and Main Roads provide funding for the implementation of the approved interim solution.

7. Rail Trail Safety Issues – Ann Street/Boat Harbour Drive Intersection and Cross-over at medical precinct at Urraween Road

Discussion was held in relation to Ann Street/Boat Harbour Drive and Urraween Road crossings.

Gerard Carlyon confirmed that Council was currently undertaking further review of the Urraween Road crossing and would provide additional information to the Advisory Committee at a future meeting.

Further discussion on the Ann Street/Boat Harbour Drive crossing would occur during the workshop outlined in Item 5.1 above.

8. Status of Advisory Committee recommendations from 30 November to Council regarding funding (FCBUGs 2024/2025 budget allocation & 3 year supply agreement for delivery of projects)

The Advisory Committee noted Council's resolution of its Meeting held in January, 2024 as included in the Advisory Committee Agenda documentation.

Tracey confirmed that given the Council resolution above a Funding Agreement was in the process of being drafted for the \$30,000 funding from this financial year and would be forwarded for execution by Fraser Coast Bicycle User Group as soon as practical.

A budget allocation request had also been included in Council's 2024/2025 operational budget package for consideration as part of Council's 2024/2025 budget deliberations.

9. Saltwater Creek & Dead Man's Gully Crossings – Development of Work Plan and costing submission to State Government

Max Voigt advised the Committee that it was the view of Fraser Coast Bicycle User group that priority should be given to the development of a work plan and costing for works to develop the Rail Trail north of Quarry Road (end of existing trail from the Maryborough end) to Aldershot.

The Committee discussed this item and noted the previous recommendation of the Committee to Council to investigate tenure issues for this section of the trail with a report on those tenure issues to be tabled at a future meeting of the Advisory Committee.

Recommendation

That Council be advised that the Mary to Bay Rail Trail Advisory Committee recommends that Council prepare a detailed Work Plan and Cost Estimates for the section of the Mary To Bay Rail Trail from north of Quarry Road and Aldershot.

6. General Business

Max Voigt, on behalf of the Advisory Committee members, noted that it was Cr David Lewis' last meeting due to his retirement from Council as at the March, 2024 election. The Advisory Committee thanked Cr Lewis for his support, guidance and advocacy of the project and wished him well in the future.

Cr Lewis responded that it had been his pleasure to Chair the Advisory Committee and had been involved in the project, in some form, since attending a site visit prior to the 2016 local government election.

7. Next Meeting

18 April, 2024 – 4pm

The meeting closed at 6.20pm.

ATTACHMENTS

- Attachment 1 - Mary to Bay Rail Trail Advisory Committee – Special Meeting Minutes – 30 November, 2023;
- Attachment 2 – Stockyard Creek & Black Swamp Creek Crossing SubGroup – Notes of Meeting held on 31 January, 2024.

Mary to Bay Rail Trail Advisory Committee

Meeting Action List

Meeting Date	Agenda Item Number	Action Item	Responsible Officer/Person	Status/Latest Update
29/9/2022	6	Tracey Genrich to finalise the Private Mary to Bay Rail Trail Advisory Committee engagement hub page and circulate an invitation to the page to all members	Tracey Genrich	In Progress
	13	Ken Diehm and Keith Parsons to have an internal discussion to discuss tenure of land and how it may impact Council's budget going forward	Ken Diehm/Keith Parsons	Closed
	General Business	Craig England to research if there was the potential to leverage Council's \$200,000 contribution for additional Rail Trail funding	Craig England	Closed
13/4/2023	3.2 Signage – Max Voigt (FCBUGs)	Signage Plan example	Craig England	Actioned
22/6/2023	4.7 Signage Working Group Progress	Coordinate further meetings of the Signage Working Group as required.	Tracey Genrich	Ongoing
	4.8 Marketing/Promotion Working Group Progress	Work with FCBUG to prepare website page	Martin Simons	In Progress. Note email sent with update. FCTE now sourcing new digital lead as original staff person has left organisation.
		Coordinate further meetings of the Marketing/Promotion Working Group as required	Tracey Genrich	Ongoing

7/9/2023	4.1 Discussion on potential creation of M2BRT User Group	Place this item on the Action List for further discussion in 6 months.	Tracey Genrich	
		Share a copy of the Atherton Tablelands document with all members of the Advisory Committee.	Tracey Genrich	
	4.2 Discussion on Crossing Solutions for Stockyard Creek/Black Swamp Creek	Prepare a draft concept plan relating to Black Swamp Creek crossing for discussion at the meeting.	Davendra Naidu	In Progress
	4.3 Suggestion to form a Working group – future implementation &			
	4.5 Safety – Vehicle & Motorbike Access to Rail Trail	Review the signage schedule prepared by the Signage Working Group and source quotations for appropriate signage in addition to source budget for the procurement and installation of such signage. Another meeting of the Signage Working Group will also be scheduled to discuss signage issues at Piggford Lane end as well.	Tracey Genrich	
	Followup with Open Space & Environment in relation to the shelter that was removed recently.	Tracey Genrich		
	4.7 Report on progress of any Tenure negotiations for the Colton Mine Lease to Maryborough section of the Rail Trail	Council to provide a report back to the M2BRTAC identifying the locations of any unresolved tenure issues, options for resolution and how Council can implement resolution of these issues	Keith Parsons/Tracey Genrich	

ACTION/COMPLETED ITEMS

Meeting Date	Agenda Item Number	Action Item	Responsible Officer/Person	Confirm Actioned/Complete
29/9/2022	5	All Committee members to advise via email to the Chair and Tracey Genrich of a “nominated delegate” as early as possible prior to each meeting	All members	Noted – closed
	8	Tracey Genrich to organise the next meeting of the group to be held in a workshop style so that Advisory Committee members can workshop the trail route, opportunities and constraints for each section, status of each section and priorities and standard of works for future sections	Tracey Genrich	Actioned
15/12/2022	Workshop	FCRC to nominate a Council employee to liaise with FCBUGs to assist in working through signage requirements and develop a plan for the complete length of the Rail Trail (Urangan to Maryborough)	Tracey Genrich	Actioned
	Workshop	FCRC to nominate a Council employee to liaise with FCBUGs to assist in working through some of the outstanding tenure issues	Tracey Genrich	Actioned. This item has been closed. This matter is being resolved through the M2BRTAC meeting as per agreed outcomes of meetings. Refer to
6/2/2023	4.5	Council to submit an application to the Minor Infrastructure funding program for a concrete bed level crossing at Stockyard Creek for a total	Tracey Genrich	Actioned

		project cost of approximately \$300,000		
13/4/2023	3.2 Signage – Max Voigt (FCBUGs)	Council to invite interested members to form a working group to look at signage of the Rail Trail.	Tracey Genrich	Actioned
		Follow up staff to assist	Keith Parsons	Actioned
	3.3 DTMR Access Licence 11km section – Max Voigt (FCBUGs)	Community Development Team to support FCBUGs with opening event	Tracey Genrich	Actioned
	3.4 DTMR Maintenance Funding – Max Voigt (FCBUGs)	FCBUGs to submit a request to the Department of Transport and Main Roads for an annual maintenance grant.	Max Voigt (FCBUGs)	Actioned
	3.5 M2BRT Website – Max Voigt (FCBUGs)	Council to obtain the relevant domain names.	Keith Parsons	Actioned Addresses purchased for 1 year. Ability to renew some/all as required. <ul style="list-style-type: none"> • m2brt.org • m2brt.org.au • m2brt.com • m2brt.com.au • m2brt.au • marytobayrailtrail.org • marytobayrailtrail.org.au • marytobayrailtrail.com • marytobayrailtrail.au

				Addresses purchased for 1 year. Ability to renew some/all as required.
	Council to invite members interested to form a working group to look at marketing and promotion of Rail Trail	Tracey Genrich	Actioned. Meeting set for 19/6	Council to invite members interested to form a working group to look at marketing and promotion of Rail Trail
	General Business	Action List to be added to future documentation and Minutes regularly distributed to the Committee	Tracey Genrich	Actioned
		Include Agenda Item re Northern Gap near Aldershot for next meeting	Tracey Genrich	Actioned
		Include Agenda Item re Maryborough Hervey Bay Road Crossing at Nikenbah for next meeting	Tracey Genrich	Actioned
22/6/2023	4.1 Member Resignation – Kelly Adams	Review previous nominations for Advisory Committee membership and source a new equestrian based member as soon as practical.	Tracey Genrich	Actioned. Emma Baird new member commenced with M2BRTAC November, 2023 meeting.
	4.2 Discussion – Progression of Rail Trail Gap near Aldershot	Advise Council that the Rail Trail Advisory Committee requests Council to consider moving forward with negotiation and resolution of tenure issues within the Aldershot sections of the rail trail.	Tracey Genrich	This item is closed – refer to new action item No 4.7 from meeting date 7 September below.
	4.3 Maryborough/Hervey Bay Road Crossing – Nikenbah	Include this item on the Agenda for the next meeting of the Advisory Committee.	Tracey Genrich	Actioned

	4.4 Update on the Planning for the Open Day Event – 26 August 2023	Resend invitation email to Martin Simons of Fraser Coast Tourism & Events.	Mike Allsop	Actioned
	4.6 Update on Progress of current Works for Queensland Project – Walker Street end of Rail Trail	Circulate images of the works to Advisory Committee members.	Davendra Naidu	Actioned
	4.7 Signage Working Group Progress	Progress with sourcing and installation of the signage elements relating to the 11klm section of the trail to be opened in August, 2023 on behalf of FCBUG.	Mike Allsop	Actioned
	4.8 Marketing/Promotion Working Group Progress	Provide content for the Mary to Bay Rail Trail website page to FCTE as soon as practical.	FCBUG	Actioned.
	4.9 Update on whether the \$20,000 request for additional funding is still in the draft 2023/2024 Budget	Include a Budget item in the Agenda for the next Advisory Committee Meeting.	Tracey Genrich	Actioned
	4.10 Potential Funding Source – Growing Regions Program	Advise Council that the Advisory Committee requests Council to consider submitting an Expression of Interest to the Growing Regions Program for creek crossings between Black Swamp Creek and Stockyard Creek.	Tracey Genrich	Actioned
7/9/2023	4.2 Discussion on Crossing Solutions for Stockyard Creek/Black Swamp Creek	Coordinate a meeting between Davendra Naidu (who will nominate any other Infrastructure Services officers required to attend), Alan Whyborn, Max Voigt, Craig England and Andy Riley as soon as practical.	Tracey Genrich	Actioned
	4.3 Suggestion to form a Working group – future implementation &			

		newly finished Walker Street section of the Rail Trail with Davendra Naidu and other appropriate staff of Infrastructure Services.		
	4.8 EOI for Membership – Rail Trail Australia Representative	Council to draft a letter to Rail Trails Australia inviting them to consider and put forward a nomination for a non-voting member of the Mary to Bay Rail Trail Advisory Committee.	Tracey Genrich	Actioned. Desley O’Grady invited and accepted. First meeting 8 February, 2024.
	General Business – Review of November Workshop progress	Circulate a copy of the November 2022 Workshop document to all members of the Group and include as an Agenda for the next meeting	Tracey Genrich	Actioned



SPECIAL MEETING MINUTES

FRASER COAST MARY TO BAY RAIL TRAIL ADVISORY COMMITTEE

**COUNCIL ADMINISTRATION CENTRE, 77 TAVISTOCK STREET
30 NOVEMBER, 2023 COMMENCING AT 4.00PM**

PRESENT:

- Cr David Lewis (Chair)
- Tracey Genrich, Manager Community Development & Engagement FCRC
- Davendra Naidu – Director Infrastructure Services FCRC
- Max Voigt – Fraser Coast Bugs Representative
- John Williams – Fraser Coast Wildlife Preservation Society Representative
- Andy Riley – community representative
- Emma Baird – community representative

APOLOGIES

- Cr Phil Truscott
- Martin Simons – General Manager FCTE
- Steve Case – Fraser Coast Cycling representative
- Alan Whyborn – community representative
- Craig England – Manager - Rail Corridor Management - Department of Transport & Main Roads

GUESTS IN ATTENDANCE

Ken Diehm – Chief Executive Officer FCRC
Gerard Carlyon – Director Strategy, Community & Development FCRC
Keith Parsons – Director Organisational Services FCRC
Kieren Stoneley – FCRC Sport & Recreation Coordinator
Dave McLeod – Fraser Coast Bicycle User Group
Matt Scott – Senior Technical Officer Road FCRC

AGENDA ITEMS

1. Welcome and Acknowledgement to Country

David welcomed all attendees and delivered an Acknowledgement to Country on behalf of the Advisory Committee.

2. Apologies

A full list of apologies is listed above.

3. Agenda Items

1. **New Colton Pty Ltd – Proposed Alternative Route Rail Trail**

Tracey Genrich circulated a copy of a set of Notes from a meeting between available members of the Mary to Bay Rail Trail Advisory Committee and representatives of New Colton Pty Ltd held on 20 November, 2023. A copy of the notes from the informal meeting held on 20 November, 2023 is attached to these Minutes for the information of Committee Members and Council.

In addition to the update included in the attached Notes, Michael Gray from New Colton Pty Ltd provided the Committee with an update of the project.

Matt Scott from Council's Infrastructure Services attended the meeting to provide detailed onsite information relating to the state of Churchill Mines Road and Peridge Road.

There were a number of alternative route scenarios and options discussed by the Committee as follows:-

Rail Trail continuing on its original route (through the Mine) until construction of the mine commences:-

- Max Voigt advised that the preferred route for the Fraser Coast Bicycle Users Group was to utilise the original route on a temporary basis until construction of the mine commenced.
- Michael Gray confirmed that this position was not supported by New Colton Pty Ltd who have safety and regulatory concerns about this approach.
- The Committee discussed a number of clauses from the Mineral Resources Act relating to access to areas subject to a mining lease and whether a Minister approval could be sought by Council.
- Ken Diehm discussed the requirements of evidencing "public interest" when making Ministerial applications and advised that it was unlikely that this would be successful for the Rail Trail project.
- Ken Diehm also stated that it was Council's experience that ceasing temporary uses, once implemented, can be a political and reputational risk for Council as members of the public perceive that their rights are being affected and therefore it was unlikely that Council would support the option for temporary use.
- Michael Gray agreed to consider the terms of section 276(1)(e) of the Act.

Halliburton Report – Alternative Route Proposal

- The alternative route proposed within the 2019 Halliburton Report does not reflect the current status of the unallocated state land – which has now been determined as "exclusive" rights under the Butchulla Land & Sea Claim determination.

- This route would require a significant amount of vegetation clearing and does not address the issues of potential conflict between rail trail users and the working rail spur to service the mine when in operation.
- Native Title requirements for this proposed route could be difficult to negotiate.
- Notwithstanding the constraints, this option should remain available for consideration, depending on the outcomes with other alternatives.

Churchill Mines Road/Peridge Road Alternative Route

- Matt Scott from Council's Infrastructure Services team provided the Committee with an update on state of this proposed alternative route. It was noted that Matt had taken the time to drive the route (as much as possible due to recent wet weather).
- The Committee noted and discussed a number of potential issues that would need to be further investigated for this route including, but not necessarily limited to:-
 - Safety of rail trail users utilising Churchill Mines Road;
 - Whether Churchill Mines Road is constructed within the road reserve;
 - Whether the Churchill Mines Road road reserve can accommodate a rail trail corridor;
 - Negotiations would be required with Ergon Energy as the holders of the easement for the electrical easement;
 - Peridge Road has some sections that may require survey and negotiation with adjoining property owners (if survey reveals that Peridge Road has been unintentionally fenced by private property owners).
 - Linking with Unnamed Road 21 into Aldershot.

Action:

That further investigations be carried out as above, and Tracey Genrich, in consultation with other internal Council Officers, prepare and table a report for a future Council meeting which includes information on the project, proposed alternative route and a recommendation from the Advisory Committee that Council authorise the Chief Executive Officer, or his delegate, to negotiate further with New Colton Pty Ltd in relation to agreement and progression of the Churchill Mines Road/Peridge Road alternative route.

2. Funding Request – Fraser Coast Bicycle Users Group

Tracey Genrich circulated a copy of correspondence from Fraser Coast Bicycle Users Group in relation a budget submission to Council's 2024/2025 annual budget. A copy of the correspondence is attached to these Minutes.

Ken Diehm confirmed that Council's Executive Leadership Team had discussed this request at its meeting held earlier that day and it was suggested at that meeting that Council should consider whether it supported a multi-year sponsorship of FCBUGs to continue works on the Rail Trail in addition to the potential for funding to be sourced for the 3 projects within the correspondence from funds quarantined by Council from the sale of Royle Street land in Maryborough.

The Committee discussed this item at length and resolved to request Council to:-

- Consider allocation of some proceeds from the sale of Royle Street, that have been quarantined for regional environmental purposes, for works on the Mary to Bay Rail Trail which will provide a demonstrated regional environmental benefit; and
- List for consideration in the 2024/2025 budget the funding of a 3 year agreement, between Council and Fraser Coast Bicycle User Group, for the continued development and maintenance of the Mary to Bay Rail Trail project.

Action:

Tracey Genrich to prepare a report for the January Council Meeting requesting Council to consider the allocation of some proceeds from the sale of Royle Street, that have been quarantined for regional environmental purposes and the entering of a 3 year agreement, between Council and FCBUGs, for the continued development and maintenance of the Mary to Bay Rail Trail.

ATTACHMENTS

- **Item 3.1 Attachment** – Notes from informal meeting – New Colton Pty Ltd/Mary to Bay Rail Trail Advisory Committee 20 November, 2023
- **Item 3.2 Attachment** – Correspondence - Request for Funding – Fraser Coast Bicycle User Group

Notes – 31 January, 2024
Stockyard Creek/Black Swamp Creek Crossing Sub-Group
Mary to Bay Rail Trail

Present: Alan Whyborn, Denis Johnson (FCBUGs), Ken McDonald (FCBUGs), Andy Riley, Craig England (DTMR – Rail Corridor Management), David Gleadow (DTMR – Rail Corridor Management), Davendra Naidu (FCRC), Rob Hazzard (FCRC), Tracey Genrich (FCRC), Mike Allsop (FCBUGs as proxy for Denis Johnson)

Apologies: Denis Johnson (FCBUGs), Craig England (DTMR – Rail Corridor Management), David Gleadow (DTMR – Rail Corridor Management)

At the meeting the subgroup were provided with a copy of the following documents:-

- High level Environmental and Cultural Heritage Assessment spreadsheet prepared by the Department of Transport & Main Roads for Bed Level Crossing solution for crossings between Stockyard Creek and south of Churchill Mines Road;
- Proposal from FCBUGs to install decking on existing plinths at both Stockyard Creek & Black Swamp Creek as a long term solution; and
- Email from Alan Whyborn outlining information from GRP Australia for a decking panel solution. (noting that Alan's private email address has been redacted for privacy reasons).

A copy of the above documents are attached to these Notes for the information of the Mary to Bay Rail Trail Advisory Committee (M2BTRAC).

The subgroup discussed the meeting information and agreed to make the following recommendations to the M2BTRAC:-

Interim Solution Recommendation

That, to address the current situation at the Stockyard Creek & Black Swamp Creek crossing, the M2BTRAC be requested to recommend to Council to negotiate with the Department of Transport & Main Roads to:-

1. Identify a minimal (low impact) works solution for the two crossings to improve the current situation at these two crossings noting that the gradients be unchanged and as per the existing onsite conditions and the solution to include appropriate signage to mitigate risk.
2. Have any environmental assessment and approvals undertaken to facilitate the approved interim solution; and
3. Have the Department provide funding for the implementation of the approved interim solution.

Long Term Solution Recommendation

That the M2BTRAC be requested to recommend to Council that a Cost Benefit Analysis be undertaken for 2 long term crossing options, those being bed level crossing or utilisation of existing concrete plinths to determine the most appropriate and cost effective long term solution with the outcomes of the Cost Benefit Analysis to be tabled at a future Advisory Committee meeting for further consideration.

DRAFT. Quality deck on concrete plinths at Black Swamp and Stockyard Creeks.

M2BRT Advisory Committee Discussion Group. 31 Jan 2024.

Another attractive low cost option to develop the Stockyard Creek and Black Swamp Creek crossings on the M2BRT is to install quality decking across existing concrete plinths. This decking will only need to support walkers, bike riders and horse riders as vehicle access already exists on both sides of both creeks. Mike and Jen Allsopp and Ken McDonald of the FCBUGs located and measured the plinths at both crossings on 24 January 2024. This is a summary of their findings.

Stockyard Creek. There are 5 concrete plinths spaced 6m apart across the centre of the creek. They originally supported the railway bridge that has been removed. They stand about 0.3m above natural ground level at each end and about 1m high in the middle where there is long grass. Three of the plinths are not easy to see as grass had covered them. The concrete is in good condition with the tops at the same level. They are 5m long and 1.2m wide. Four prefabricated support frames 6m long and 2.4m wide could be lifted on to these plinths with a small crane before fastening.

Side safety rails are likely to be needed. The decking would need to be good quality and permeable for rain. Some degree of fire resistance is desirable although it is mostly a wet/moist environment. Earth ramps would need to be constructed at each end. This is a low cost option that is environmentally friendly.

Black Swamp Creek. There are 9 concrete plinths spaced 6.2m apart across the centre of the creek. They range from 0.5 to 1.5m high. The tops are level. The plinths are 3.7m long and 0.7m wide. Ten prefabricated support frames 6.2m long and 2.4m wide could be lifted on to these plinths with a small crane before fastening. Side safety rails are likely to be needed.

Tall melaleuca trees would need to be removed as they are extensive and between the plinths. Again, the decking would need to be good quality and permeable for rain. Some degree of fire resistance is desirable. Earth ramps are NOT required as the original abutments at a similar level still exist. This is a low cost option that is environmentally friendly.

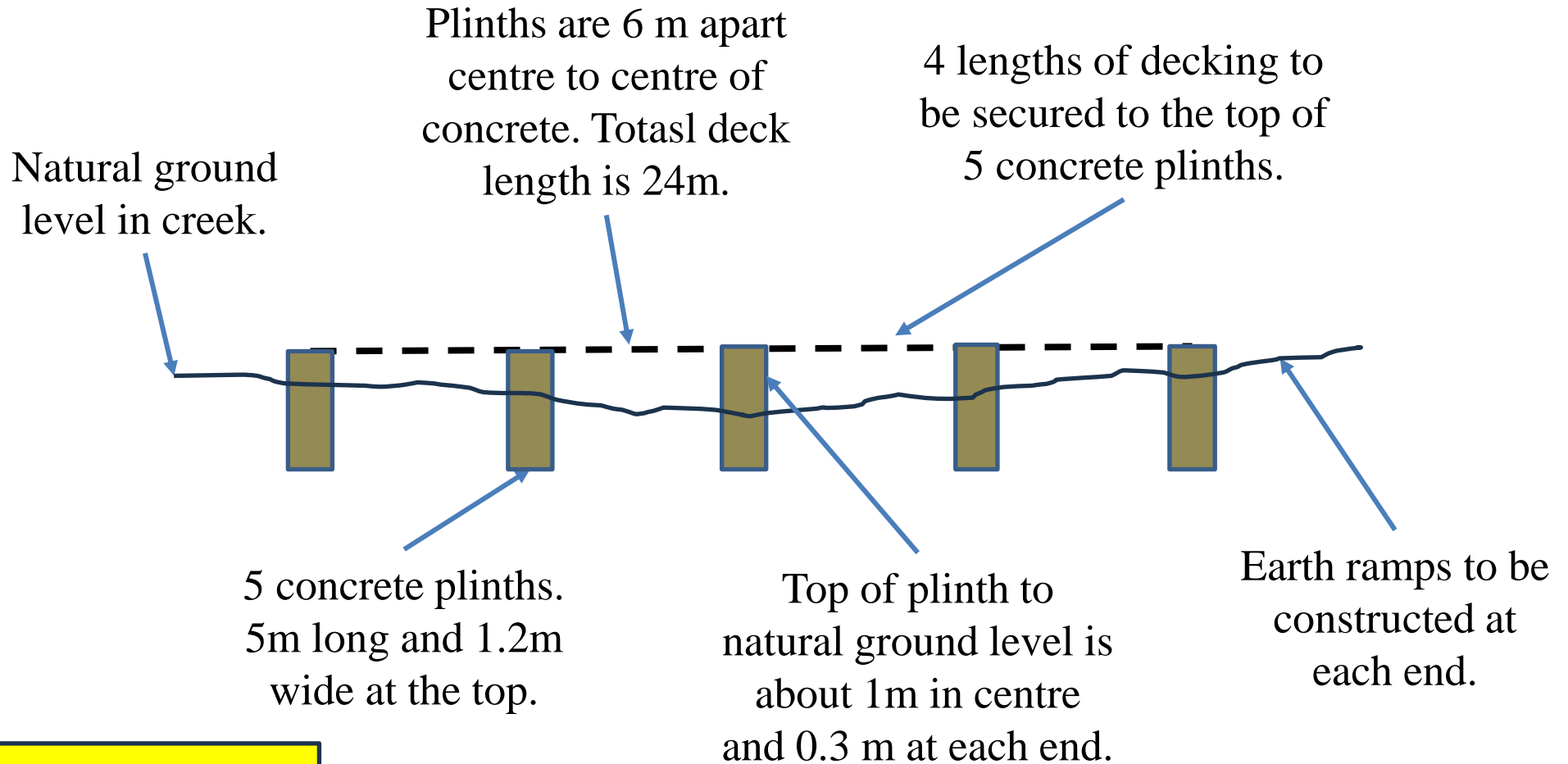
Summary. This option makes good use of the existing railway asset. It is environmentally friendly, aesthetically pleasing and will have very good practical functionality. It is emphasised that a cost effective design is to make it fit-for-purpose. Ie. Service the needs of walkers, bike riders and horse riders only. A horse weighs about 600 to 700kg, so designing for 2 horses on a 6 m span will require say a 2 tonne static load design. Given that the concrete plinths are so massive and in such good condition it seems like a marvellous opportunity to utilise them. A sub-option is to user timber for the support structure. This has been used in many areas in Hervey Bay.

Completion of these two crossings will be a major improvement for rail trail users. It also presents an opportunity to regenerate the surrounding areas that are currently an eye sore and environmental mess.

For your consideration

Ken McDonald and Mike Allsopp
FCBUG January 2024

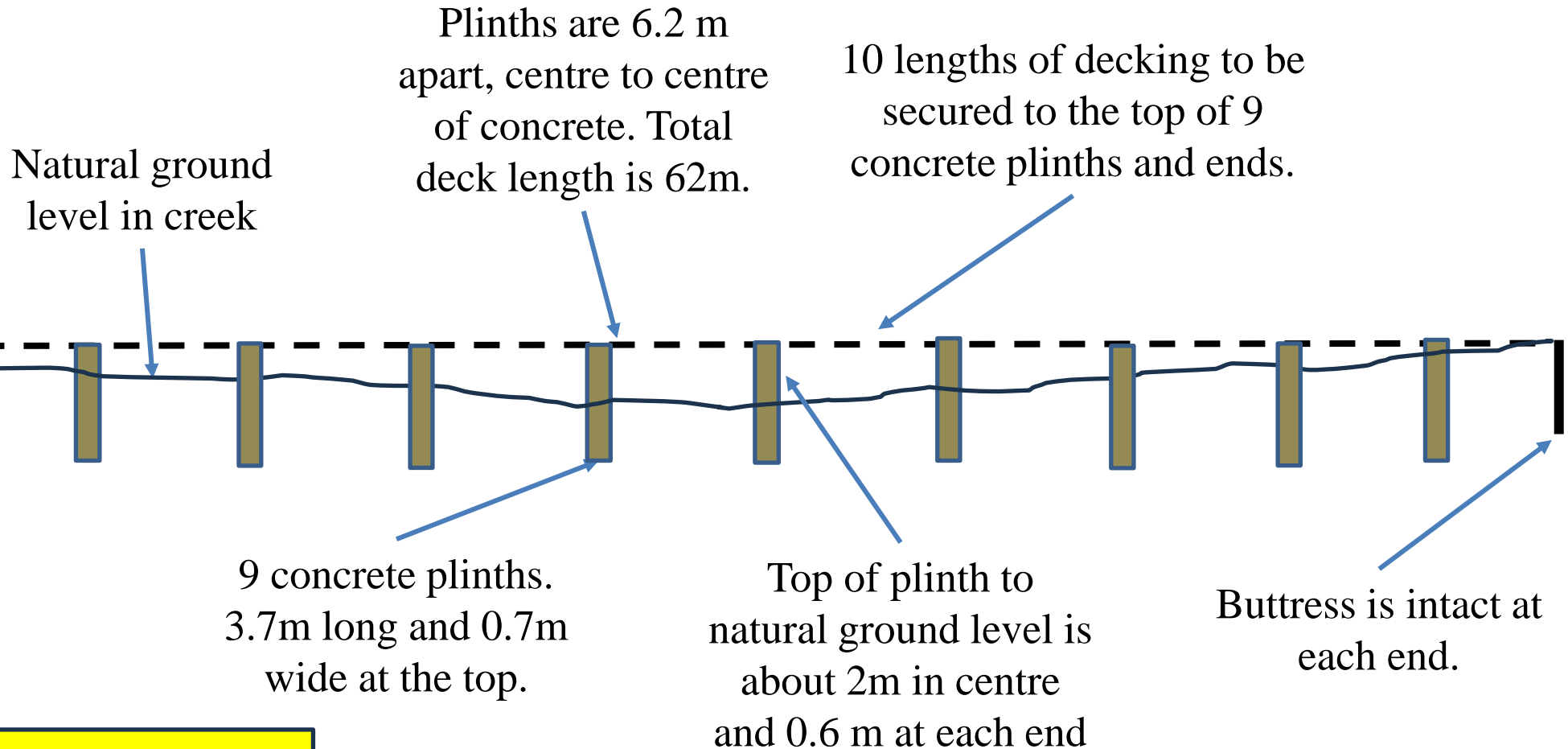
Profile of Plinths at Stockyard Creek



Note. Creek beds are dry most of the year

Not to scale ... sketch Ken McDonald. Jan 2024

Profile of Plinths at Black Swamp Creek



Note. Creek beds are dry most of the year

Not to scale ... sketch Ken McDonald. Jan 2024

Tracey Genrich

From: Wednesday 31 January 2024 12:23 PM
Sent: Tracey Genrich
To: FW: Possible Decking - GRP Grating
Subject: Image 6.jpg; Image 5.jpg; Gold Coast Council areas - Kick rail and moulded mesh.jpg; Kick rail and mesh.jpg
Attachments:

Hi Tracey

Could this be distributed to the Subcommittee please. I will bring it up during today's meeting.

Cheers

Alan Whyborn

From: Harrison Gavin <Harrison@grpaustralia.com.au>
Sent: Wednesday, January 31, 2024 11:10 AM
To:
Subject: RE: General Enquiries [#414]

Good Morning Alan,

Great to talk with you today about the project,

Listed below is a grating type I would recommend for your project however a substructure will be required to suit your specified loads,

MG1938 | 38mm thick | 1220 x 2440 | Black Grey – Fine Grit | \$395 per panel (xGST),
-included are a few photos of past projects we have supplied grating too in the same material,

I'll leave you with this initial information for now however don't hesitate to give us a call if you have any questions,

Kind Regards,
Harrison



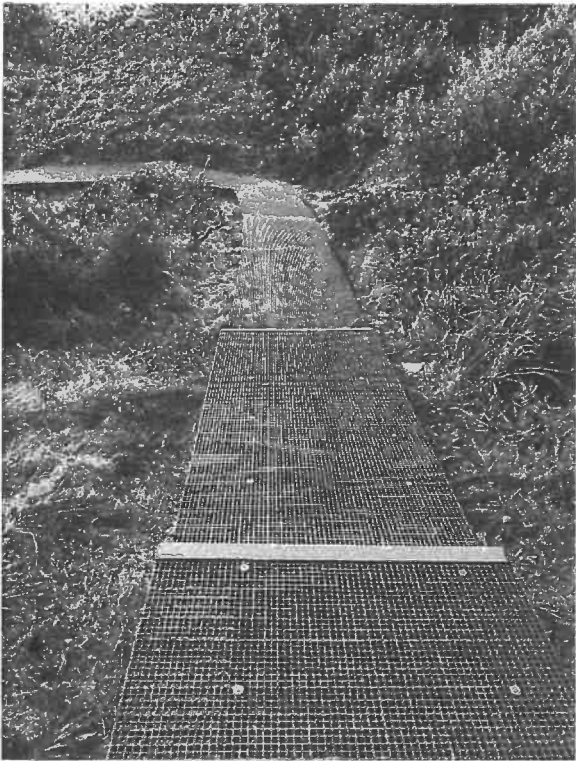
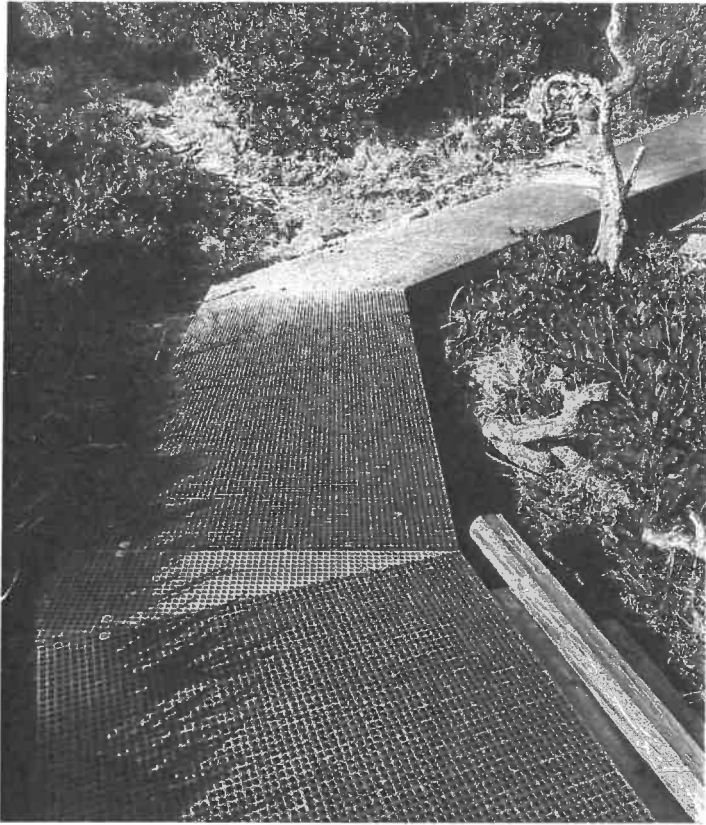
Harrison Gavin

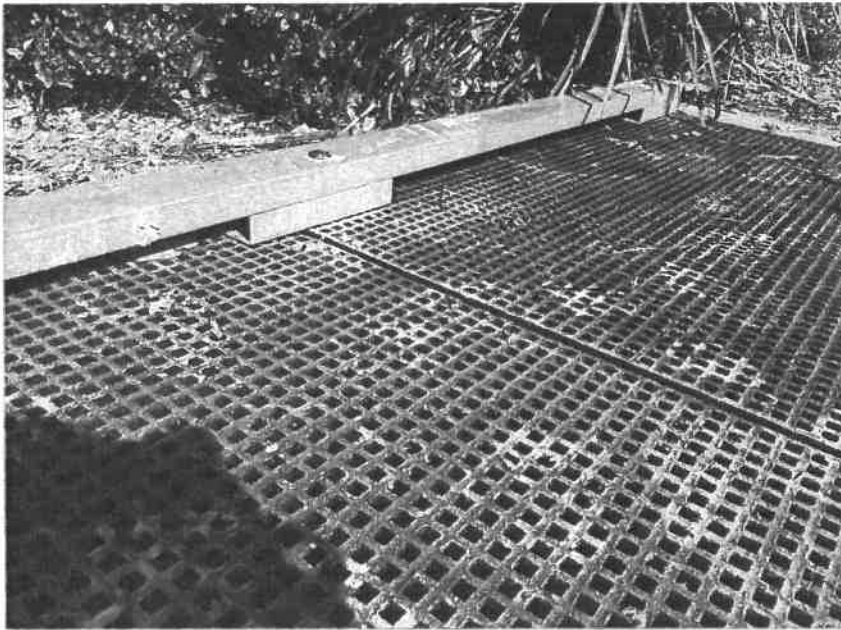
Estimator | Sales
Graduate Industrial Designer

P 07 3252 1244

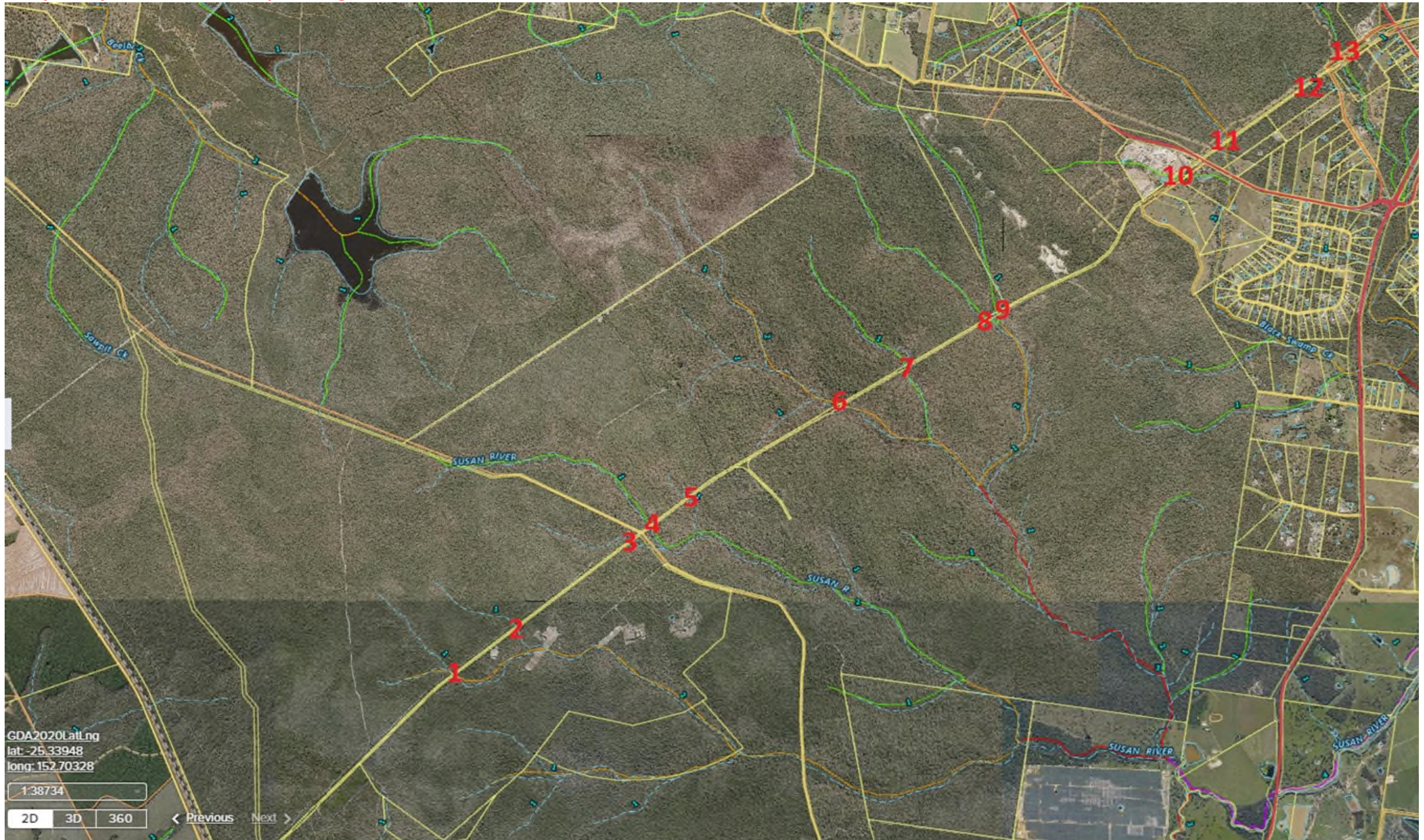
<https://www.grpaustralia.com.au>

25 Shannon Place, Virginia QLD 4014

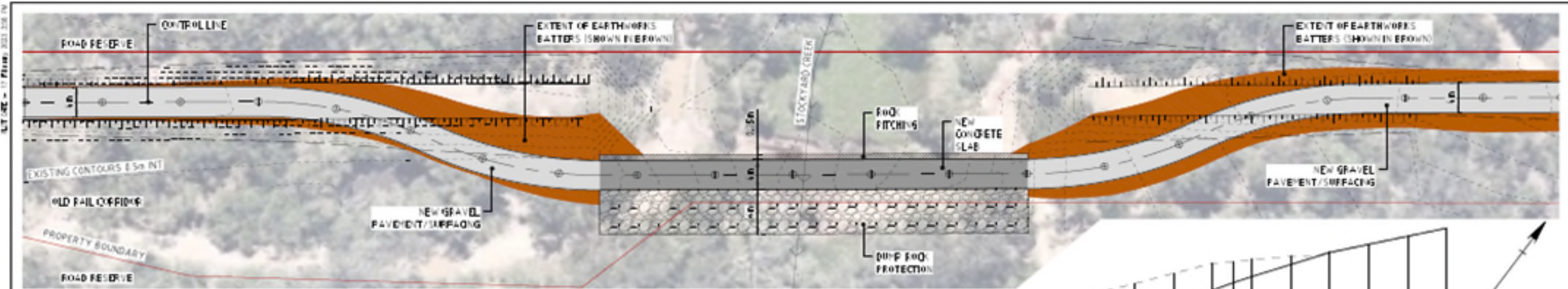
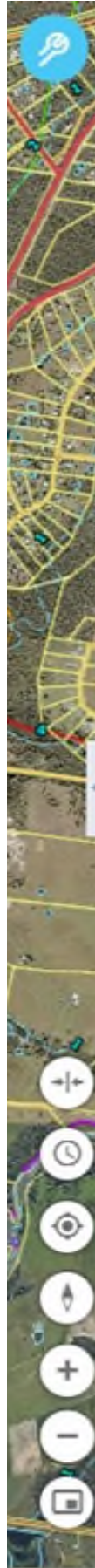




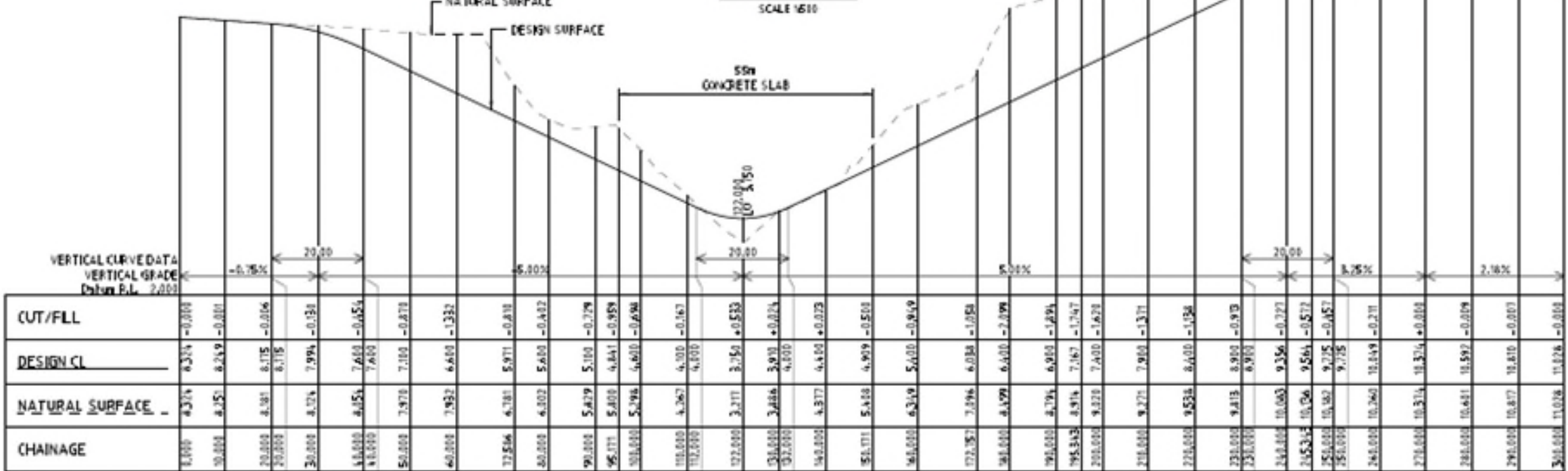
Mary to Bay Rail Trail Waterway crossing sites 1-13



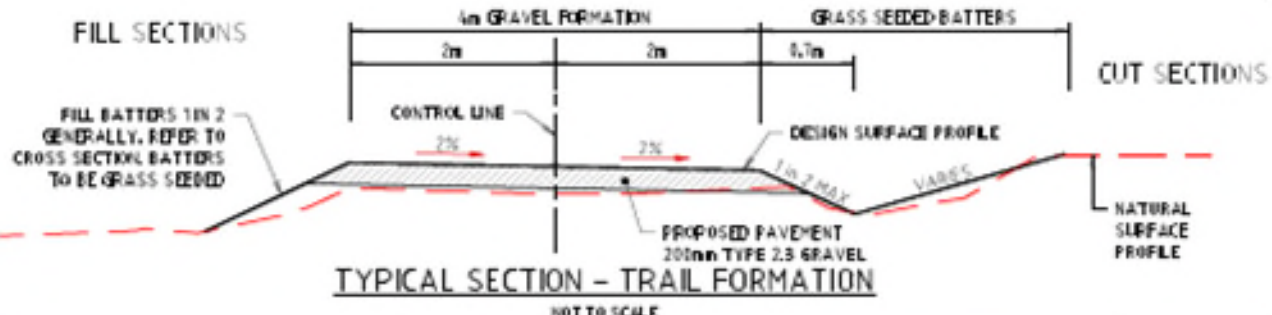
Mary to Bay Rail Trail example of proposed crossing



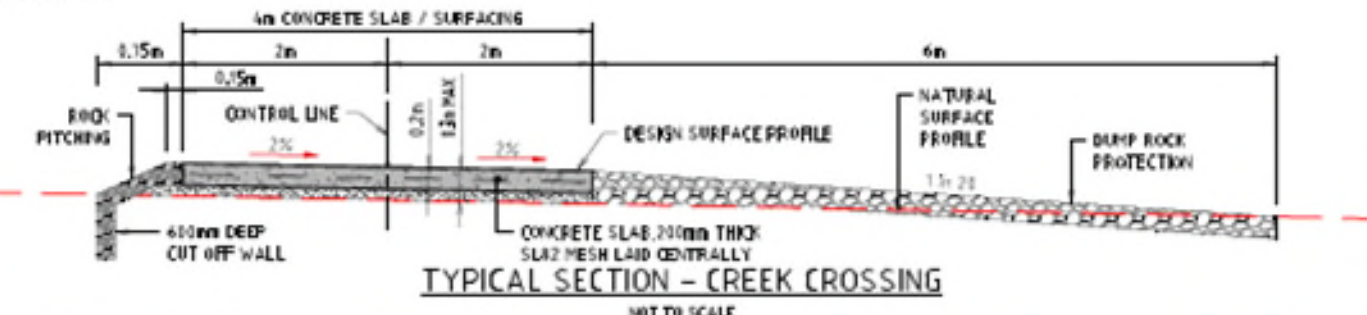
LAYOUT PLAN
SCALE 1:500



LONGITUDINAL SECTION
HORIZ 1:1000 VERT 1:100



TYPICAL SECTION - TRAIL FORMATION
NOT TO SCALE



TYPICAL SECTION - CREEK CROSSING
NOT TO SCALE

<p>FRASER COAST REGIONAL COUNCIL</p> <p>MARY TO BAY RAIL TRAIL STOCKYARD CREEK CROSSING SKETCH DESIGN</p>		<p>FRASER COAST REGIONAL COUNCIL</p> <p>1300 784 829</p> <p>www.frasercoast.qld.gov.au</p>		<p>DATE: 02/22/25</p> <p>SCALE: HORIZONTAL SCALE 1:1000 (H) VERTICAL SCALE 1:100 (V)</p>	<p>DESIGNED BY: FCR</p> <p>DRAWN BY: J. STEPHENSON</p> <p>CHECKED BY: J. STEPHENSON</p> <p>DATE: 02/22/25</p>	<p>PROJECT No. _____</p>	<p>SKETCH</p> <p>SHEET 02 OF 02 DRGS</p> <p>A3</p> <p>YEAR: 22/25</p>
---	--	--	--	--	---	--------------------------	---

Mary to Bay Rail Trail Waterway crossing sites 1-13: Rapid Environmental Assessment

Factor	Dataset Title	What this search shows	Issue for sites 1-13	Impact on project	Action Required
Water	Coastal plan coastal management district	The coastal management district is an area that is considered to need protection or management, especially with respect to vulnerability to erosion, value in maintaining or enhancing coastal resources or for planning and development of the area.	None of the sites are within a Coastal Management District	N/A	N/A
Water	Highest astronomical tide - Queensland	Used in assessing erosion prone areas and marine plant disturbance	None of the sites are within a HAT area	N/A	N/A
Water	TMR's State-wide Stormwater Quality Risk Mapping	Modelled water quality impact assessment	None of the sites are within a stormwater risk area	N/A	N/A
Water	Watercourse identification map - watercourses - Queensland	Features which are defined as Watercourses under the Water Act for each District.	Sites 1-13 are mapped as watercourses	There is potential for impacts to the watercourses from earthworks and vegetation clearing	For each site check if the Clearing limits and Volumetric limits in the Riverine protection permit exemption requirements apply, if not will require a RRP permit.
Soil and Land	Combined acid sulfate soils layer for Queensland	Acid Sulphate Soil data is provided in two categories - a) data extracted from ASRIS which a combination of modelled and field survey data may be b) field survey only. The latter is more accurate and should be used before the ASRIS data.	None of the sites are within an ASS area	N/A	N/A
Soil and Land	Defence - Unexploded Ordnance Map	Defence - Unexploded Ordnance Map	None of the sites are in a mapped UXO area	N/A	N/A

Soil and Land	Environmental Management Register and Contaminated Land Register	The Environmental Management Register (EMR) and the Contaminated Land Register (CLR) are public registers which contain information about contaminated land in Queensland. The EMR also contains information of land which is, or could potentially be, contaminated because it is being used for an activity which may cause contamination.	Site 13 is in area mapped as being on the EMR or CLR	Contaminated soil with either need to be avoided, contained onsite or removed for offsite disposal (least preferred due to costs).	- Contaminated Land investigation to determine extent of contamination and management options
Soil and Land	TMR Soil Group Classification	TMR Soil Group Classification (by District) is the soils information relevant to TMR activities and uses the TMR soil group classifications; To determine the limitations to work activity including construction in the road reserve given the risk posed due to the chemical and/or physical properties of the soils.	All sites except 10 and 12 are mapped as Uniform non-cracking clays & Loamy gradational soils, Low Risk. Site 10 is mapped as Made Land, High Risk. Site 12 is mapped as TC soils (dispersive), High Risk	Sites 10 and 12 have high potential for erosion or soil related issues.	Ensure project E&SC Plans take into consideration the soil risks.
Flora	EPBC Act protected matters - Listed flora	This is a web-based GIS program which, based on an area you select, identifies what recorded protected matters potentially exist in that locality	Sites 1-13 contain: World Heritage Properties: None National Heritage Places: None Wetlands of International Importance (Ramsar 1) Great Barrier Reef Marine Park: None Commonwealth Marine Area: None Listed Threatened Ecological Communities: 4 Listed Threatened Species: 37 Listed Migratory Species: 18	The project may be a significant impact on them which would require referral for a controlled action. There is potential for significant cost and time delays.	- detailed investigation to determine if there will be a significant impact - Possible PBC Referral

Flora	Flora Survey Trigger Map for Clearing Protected Plants in Queensland	High risk areas, under the Nature Conservation Act 1992, where plants classed as endangered, vulnerable or near threatened wildlife are present or are likely to be present.	Sites 1-5, 11 and 13 are within the Trigger area	A flora survey may be required and the project may need a permit for clearing protected plants (offset may be required).	Check if clearing within Sites 1-5, 11 and 13 is exempt, if not organise flora survey and possible clearing permit https://www.qld.gov.au/environment/plants-animals/plants/protected-plants/clearing
Flora	Highest astronomical tide - Queensland	HAT is considered the boundary for the presence of marine plants which are protected under the Fisheries Act 1994. Disturbance that exceeds activity thresholds will require offsets.	None of the sites are within a HAT area	N/A	N/A
Fauna	EPBC Act protected matters - Listed fauna	This is a web-based GIS program which, based on an area you select, identifies what recorded protected matters potentially exist in that locality	Sites 1-13 contain: World Heritage Properties: None National Heritage Places: None Wetlands of International Importance (Ramsar 1 Great Barrier Reef Marine Park: None Commonwealth Marine Area: None Listed Threatened Ecological Communities: 4 Listed Threatened Species: 37 Listed Migratory Species: 18	The project may be a significant impact on them which would require referral for a controlled action. There is potential for significant cost and time delays.	- detailed investigation to determine if there will be a significant impact - Possible PBC Referral
Ecosystems and Habitats	Assessable Development Areas and Koala Habitat Values	Assessable Development Areas and Koala Habitat Values	None of the sites are within a Koala Habita Value area	NA	N/A
Ecosystems and Habitats	EPBC Act protected matters - threatened ecological communities	This is a web-based GIS program which, based on an area you select, identifies what recorded protected matters potentially exist in that locality	Sites 1-13 contain: World Heritage Properties: None National Heritage Places: None Wetlands of International Importance (Ramsar 1 Great Barrier Reef Marine Park: None Commonwealth Marine Area: None Listed Threatened Ecological Communities: 4 Listed Threatened Species: 37 Listed Migratory Species: 18	The project may be a significant impact on them which would require referral for a controlled action. There is potential for significant cost and time delays.	- detailed investigation to determine if there will be a significant impact - Possible PBC Referral

Ecosystems and Habitats	Fish habitat areas - Queensland	A permit will be required for assessable works in a FHA. In or out. If in, the Fisheries Act and Sustainable Planning Act are triggered. For assessable works a permit will be required. A self assessable code MAY be applicable.	None of the sites are within a FHA	N/A	N/A
Ecosystems and Habitats	Map of Great Barrier Reef wetland protection areas	Trigger area where the Wetland Protection Area policies apply.	Sites 5, 10, 11, 12 and 13 are within GBR wetland protection areas	If project can meet requirements of code found in schedule 14 of Planning Regulation 2017 work is accepted development and does not require a development approval.	- Check if sites 5, 10, 11, 12 and 13 meet the code requirements - Development Application -offsets
Ecosystems and Habitats	Wetland Protection Area - HES wetland	Wetland Protection Areas of High Ecologically Significant Wetland (must be displayed with trigger area dataset below).	Sites 11 and 13 are HES wetland areas	If project can meet requirements of code found in schedule 14 of Planning Regulation 2017 work is accepted development and does not require a development approval.	- Check if sites 11 and 13 meet the code requirements - Development Application -offsets
Ecosystems and Habitats	Queensland waterways for waterway barrier works	The data layer consists of colour coded lines of streams showing the level of assessment and culvert design required for any proposed waterway barrier works.	Sites 1, 6, 11 are mapped as amber watercourses Sites 4, 7, 8, 9, 10 and 13 are mapped as green watercourses Sites 2, 3, 5 and 12 are not coloured-coded for waerway barrier purposes	The project can meet the accepted development requirement by using standard design set out in: https://www.daf.qld.gov.au/__data/assets/pdf_file/0006/1476888/adr-operational-waterway-barrier-works.pdf	- If unable to meet the acceptable development requirements, a Development Approval maybe required - Use 'SD1270 - Fish Passage - R C Box Culverts in ADR Red Mapped Waterways' - Use 'SD1271 - Fish Passage - R C Box Culverts in ADR Amber Mapped Waterways'
Ecosystems and Habitats	Queensland waterways for waterway barrier works - Tidal	The data layer assists in the determination of whether the site of proposed waterway barrier works requires assessment and approval under the Fisheries Act 1994.	None of the sites are mapped as Tidal Waterway barrier watercourses	N/A	N/A
Ecosystems and Habitats	Ramsar Wetlands of Australia	An impact on a Ramsar area requires that an EPBC referral be completed.	None of the sites are within a Ramsar wetland	the project will need to be refered for a controled action determination.	- detailed assessment - significant impact assessment - EPBC referral
Ecosystems and Habitats	Vegetation management - essential habitat map	Essential habitat areas for threatened species.	All sites except 10 are within Essential Habitat mapped area	Approvals may be required to disturb this habitat and offsets may also be required	- Determine if works will require vegetation clearing - detailed assessment - SMP/Damage mitigation permit - significant impact assessment

Ecosystems and Habitats	Vegetation management regional ecosystem map	Fundamental information on the regional ecosystems present which can be used for assessing community, flora and fauna impacts	All sites except 10 are with Regional Ecosystem 12.3.11/12.3.5, the former is Of Concern	Approvals may be required to disturb this vegetation and offsets may also be required	- Determine if works will require vegetation clearing - detailed assessment - SMP/Damage mitigation permit - significant impact assessment
Ecosystems and Habitats	Vegetation management watercourse and drainage feature map	This dataset has been created to implement the watercourse requirements as defined under the Regional remnant vegetation management codes for Queensland, exclusive of SEQ Local Governments, where 25K drainage applies.	All sites except 10 are within a Vegetation management watercourse and drainage feature	Approvals may be required to disturb this vegetation and offsets may also be required	- Determine if works will require vegetation clearing - detailed assessment - SMP/Damage mitigation permit - significant impact assessment
Ecosystems and Habitats	Vegetation management watercourse and drainage feature map 1:25,000	This dataset defines creeks, streams, rivers and watercourses at a scale of 1:25, within the local government areas of Brisbane, Moreton Bay, Sunshine Coast, Gold Coast, Logan and Redland, for the implementation of Regional Vegetation Management Code for South East Queensland Bioregion.	No sites are in the 1:25,000 mapping	N/A	N/A
Biosecurity matters	Banana biosecurity zones - Queensland	Areas with specific management requirements for the biosecurity matter	No sites within a banana biosecurity zone	N/A	N/A
Biosecurity matters	Asian honey bee known infested area - Queensland	Potential for Asian honey bee to be present in the area	No sites within a Asian honey bee biosecurity zone	N/A	N/A
Biosecurity matters	Cattle tick zones - Queensland	Areas with specific management requirements for the biosecurity matter	All sites with Cattle Tick Zone		Add the following information to MRTS51.1 Clause 10.2: Cattle Tick Biosecurity Zone

Biosecurity matters	Electric ant biosecurity zone - Queensland	Areas with specific management requirements for the biosecurity matter	No sites within an electric ant biosecurity zone	N/A	N/A
Biosecurity matters	Electric ant restricted zone - Queensland	Movement control areas within the Electric Ant biosecurity zone	No sites within an electric ant restricted zone	N/A	N/A
Biosecurity matters	Far Northern biosecurity zones - Queensland	Areas with specific management requirements for the biosecurity matter	No sites within a Far North biosecurity zone	N/A	N/A
Biosecurity matters	Fire ant biosecurity zones	Areas with specific management requirements for the biosecurity matter	No sites within a fire ant zone	N/A	N/A
Biosecurity matters	Grape phylloxera biosecurity zones - Queensland	Areas with specific management requirements for the biosecurity matter	All sites are with the Grape phylloxera biosecurity zone		Add the following information to MRTS51.1 Clause 10.2: Grape phylloxera Biosecurity Zone
Biosecurity matters	Papaya ringspot biosecurity zones - Queensland	Areas with specific management requirements for the biosecurity matter	All sites within the Papaya biosecurity zone		Add the following information to MRTS51.1 Clause 10.2: Papaya ringspot Biosecurity Zone
Biosecurity matters	Sugar cane biosecurity zones - Queensland	Areas with specific management requirements for the biosecurity matter	All sites within the sugar cane biosecurity zone		Add the following information to MRTS51.1 Clause 10.2: Papaya ringspot Biosecurity Zone
Air	Queensland land use mapping	Land use in project area can be used to assess proximity of sensitive receptors	All sites are generally in rural areas and the size of the work is unlikely to impact sensitive receptors	N/A	N/A
Noise and Vibration	Queensland land use mapping	Land use in project area can be used to assess proximity of sensitive receptors	All sites are generally in rural areas and the size of the work is unlikely to impact sensitive receptors	N/A	N/A
Noise and Vibration	Transport Noise Corridors Stage 2 Rail Mandatory	Modelled noise contours for rail lines	None of the sites are near rail corridor noise mapping	N/A	N/A
Noise and Vibration	Transport Noise Corridors Stage 2 Road Mandatory	Modelled noise contours for roads. The noise contours (façade corrected) represent the Year 2025 scenario.	Sites 10 and 11 are near mapped road mapping, but unlikely to be impact	N/A	N/A
Amenity	Queensland land use mapping	Land use in project area can be used to assess proximity of sensitive receptors	All sites are generally in rural areas and the size of the work is unlikely to impact sensitive receptors	N/A	N/A

Resource Use and Waste	Water plan areas - Queensland	Shows the overall area for each Water Plan (generally a catchment area)	All sites are within the Mary Basin Water Plan area	Check if proposed works apply to Water Plan: https://www.business.qld.gov.au/industries/mining-energy-water/water/catchments-planning/water-plan-areas/mary-basin	
Resource Use and Waste	Water plan catchments - Queensland	This are a sub-set of the Water Plan Areas. Used along with the relevant Water Plan to define rules for accessing water. See Legislation ReCAP for Water Plan summary.	All sites are within the Lower Mary River Water Plan area	Check if proposed works apply to Water Plan: https://www.business.qld.gov.au/industries/mining-energy-water/water/catchments-planning/water-plan-areas/mary-basin	
Resource Use and Waste	Water plan nodes - Queensland	Where a permit may be required or must comply with the self-assessable code when using overland flow.	No water plan nodes near the sites	N/A	N/A
Resource Use and Waste	Water plan watercourses - Queensland	Sections of watercourses which have specific management in a water plan	No water plan watercourses near the sites	N/A	N/A
Special Areas and Land Tenures	Defence Practice Areas	No Info	No sites within Defence areas	N/A	N/A
Special Areas and Land Tenures	Defence Prohibited Areas	No Info	No sites within Defence areas	N/A	N/A
Special Areas and Land Tenures	Defence Training Areas	No Info	No sites within Defence areas	N/A	N/A
Special Areas and Land Tenures	Forest consent areas - Queensland	To identify the areas that are managed by HQ Plantations but the trustee is QPWS on behalf of the state of Queensland.	No sites within a forest area	N/A	N/A
Special Areas and Land Tenures	Forest entitlement areas - Queensland	To identify the areas that are managed by HQ Plantations but the trustee is QPWS on behalf of the state of Queensland.	No sites within a forest area	N/A	N/A

Special Areas and Land Tenures	Forest management units - Queensland (MUID)	To identify the areas that are managed by HQ Plantations but the trustee is QPWS on behalf of the state of Queensland.	No sites within a forest area	N/A	N/A
Special Areas and Land Tenures	Forest plantation licence areas - Queensland	To identify the areas that are managed by HQ Plantations but the trustee is QPWS on behalf of the state of Queensland.	No sites within a forest area	N/A	N/A
Special Areas and Land Tenures	Nature refuges - Queensland	Nature refuges listed under the Nature Conservation (Protected Areas) Regulation	No nature refuges near any of the sites	N/A	N/A
Special Areas and Land Tenures	Protected areas of Queensland	Protected areas managed by QPWS for areas managed under NC Act 1992, and areas managed under the Forestry Act 1959 (State Forest and Timber Reserve).	Sites 11, 12 and 13 are directly adjacent to Vernon Conservation Park	Worked within the CP will require permit from DES	Avoid any impact in the Conservation Park, if necessary a permit will be required
Special Areas and Land Tenures	Regional planning interests - Strategic environmental area	Regional Interest Development Approval when they are carrying out a a) Resource Activity OR b) Regulated Activity. The regulation currently only prescribes two things as a regulated activity - for Strategic Environmental Areas a) Broad scale Cropping (TMR does not do this) and water storage (dam) other than for domestic and stock purpose.	No sites with a SEA	N/A	N/A
Special Areas and Land Tenures	Special Management Areas Great Barrier Reef Marine Park	Additional layer on GBRMP zoning for species or site specific management.	No sites in GBR special management area	N/A	N/A

Special Areas and Land Tenures	Special management areas of Queensland	To identify the areas that are managed by HQ Plantations but the trustee is QPWS on behalf of the state of Queensland.	No sites in special management area	N/A	N/A
Special Areas and Land Tenures	State Development areas - Queensland	The State Development areas dataset contains the boundaries of gazetted State Development Areas in Queensland, where the custodian is the Coordinator General.	No sites with a State development area	N/A	N/A
Special Areas and Land Tenures	Strategic Ports Land	Land that is controlled by a port authority	No sites with SPL	N/A	N/A